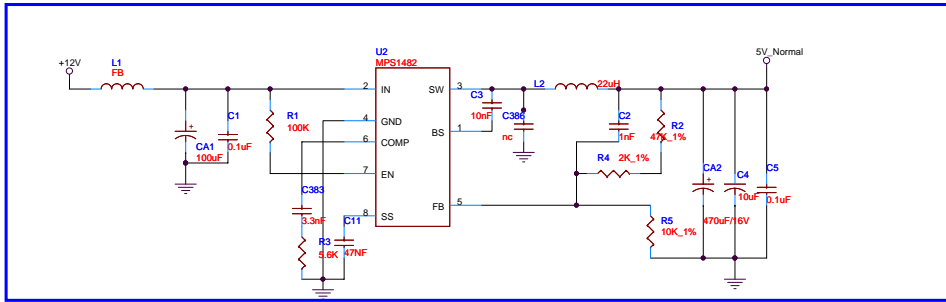
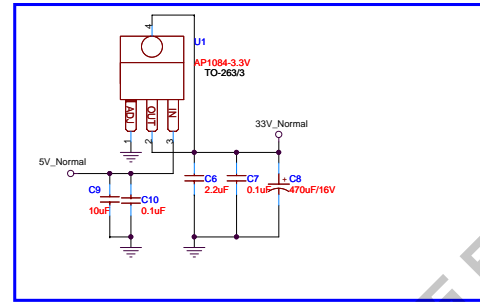


SYSTEM POWER

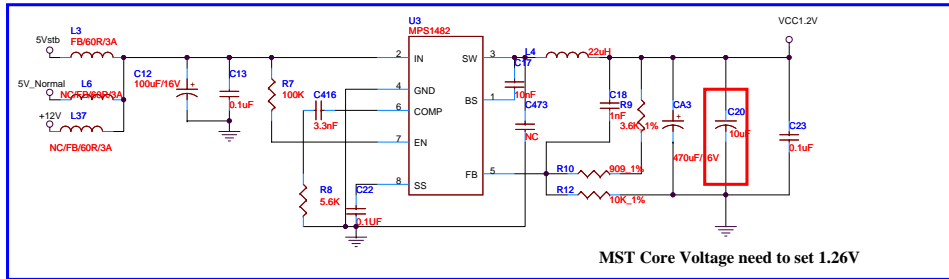


+3.3V NORMAL POWER



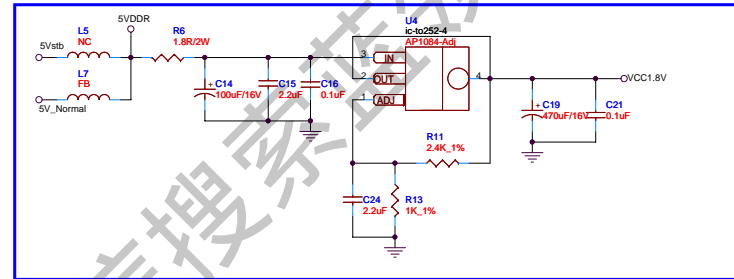
TP1 OPTICAL TP2 OPTICAL
 TP3 OPTICAL TP4 OPTICAL
 OPTICAL SPOT
 Size = 40mil circle
 Can not put any component, text, trace or polygon into 40mil area.

+1.26V FOR MSTAR IC CORE POWER

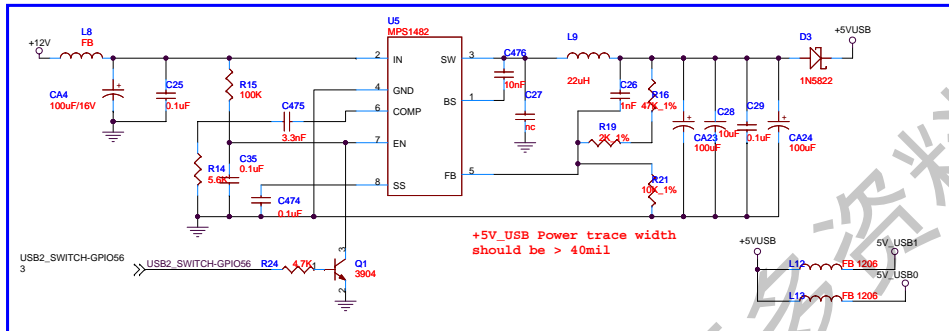


MST Core Voltage need to set 1.26V

DDR2 Power 1.8V

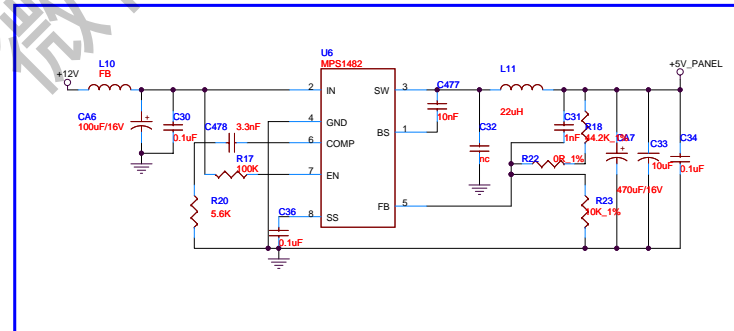


USB Power



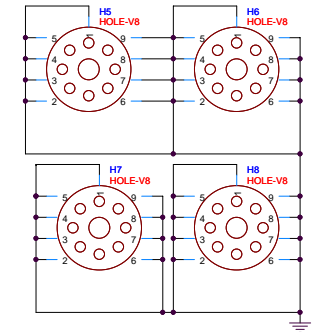
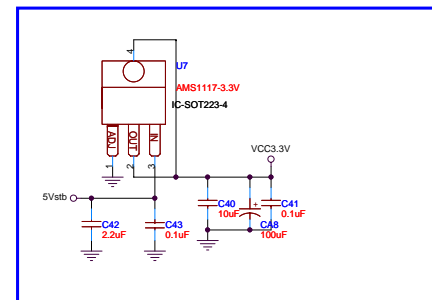
+5V_USB Power trace width should be > 40mil

PANEL POWER

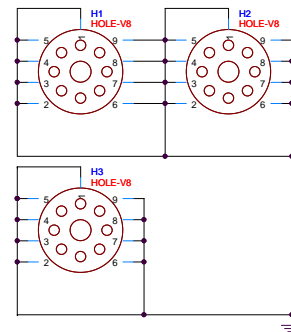
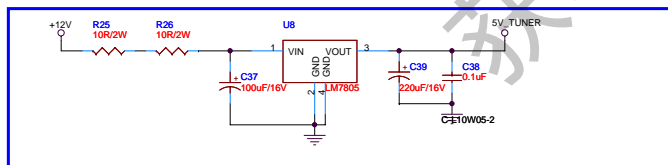


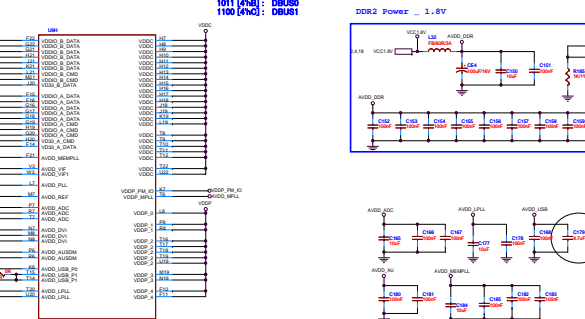
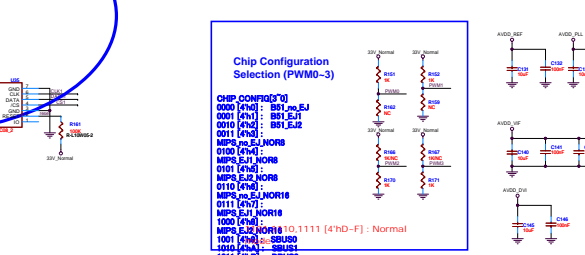
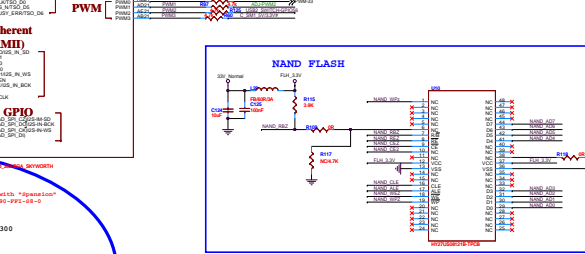
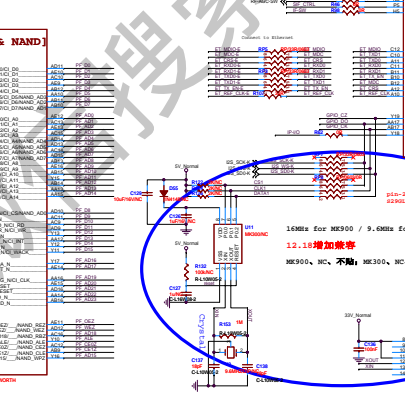
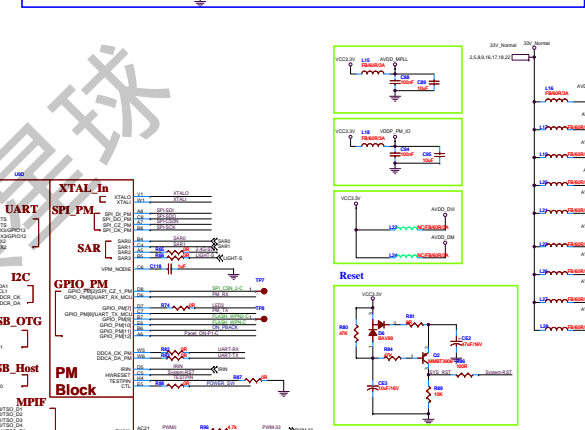
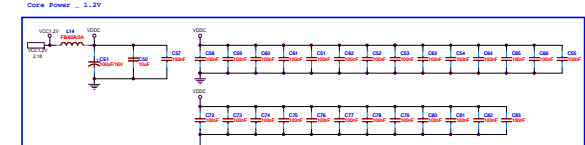
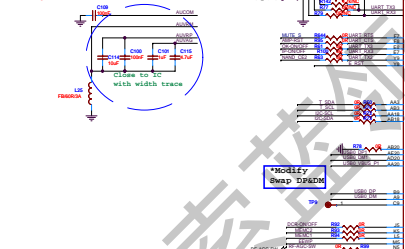
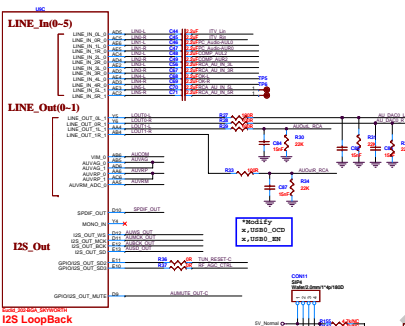
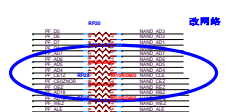
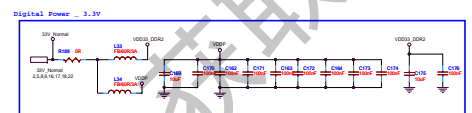
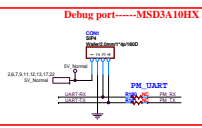
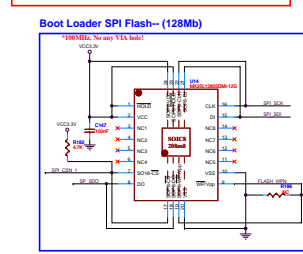
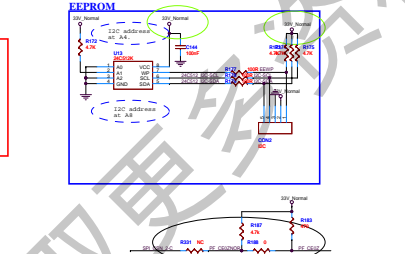
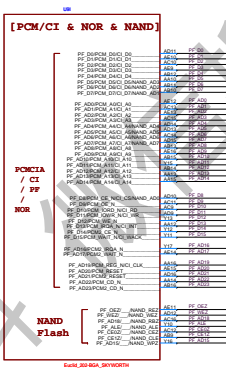
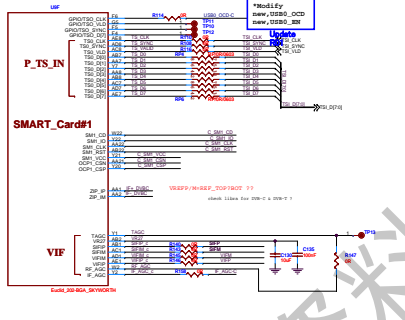
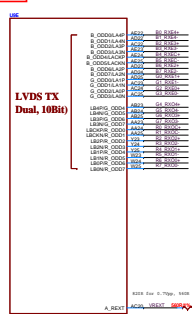
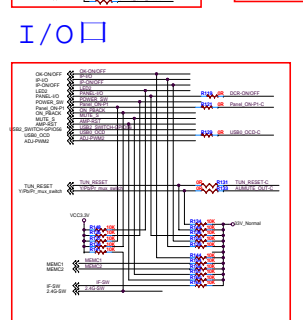
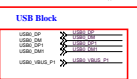
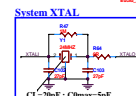
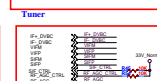
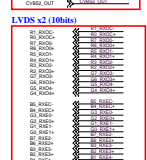
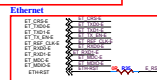
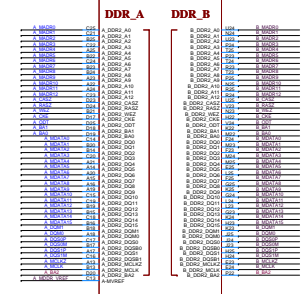
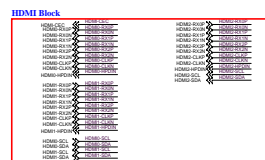
VCC3.3V Standby Power only for AVDD_MPLL, VDDP_PM, VDDP_PM_IO

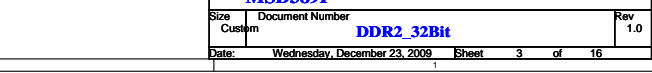
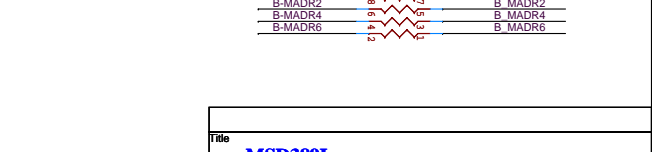
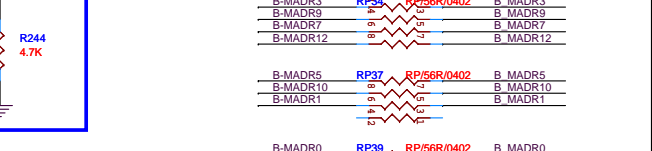
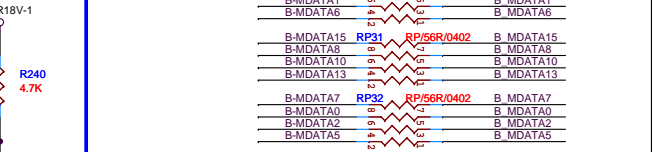
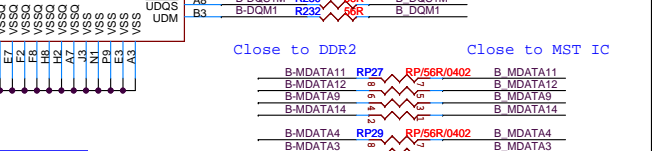
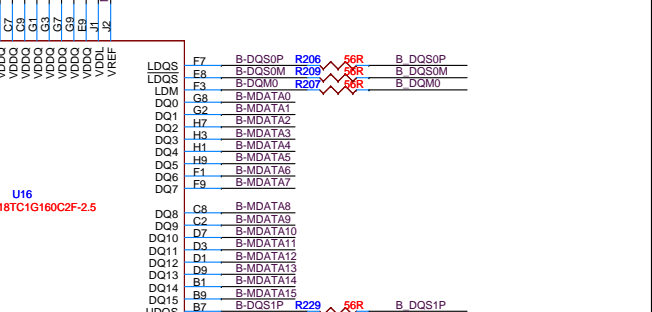
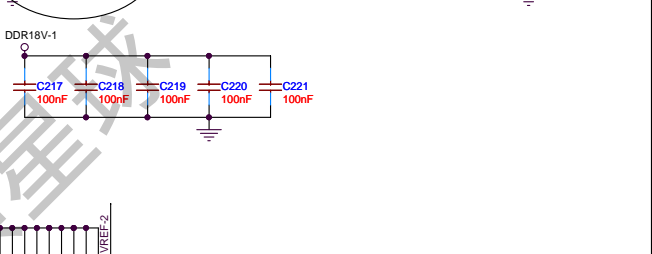
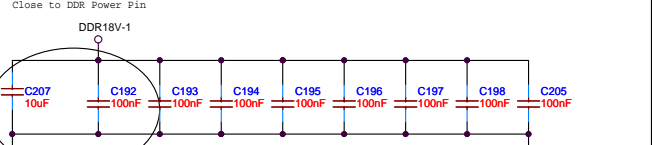
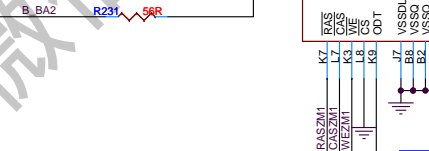
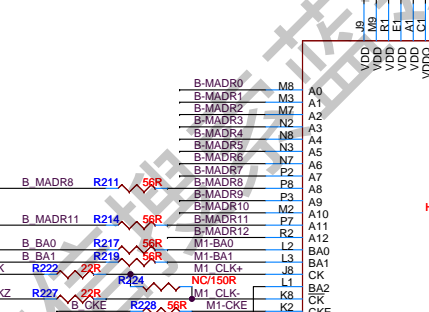
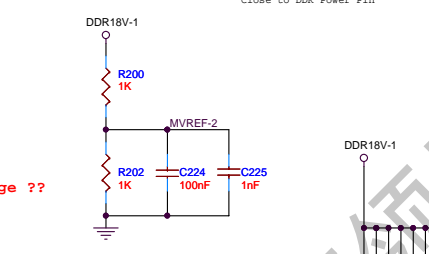
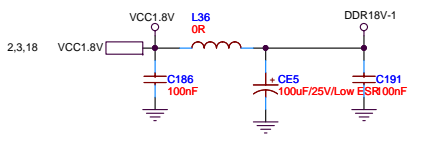
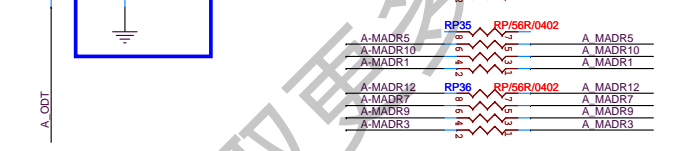
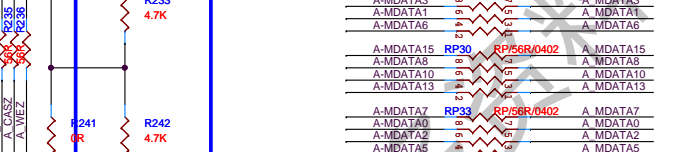
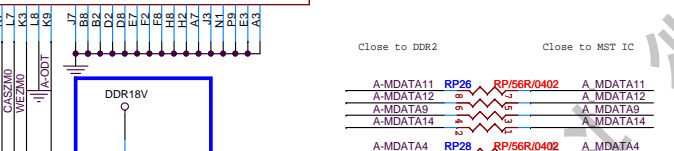
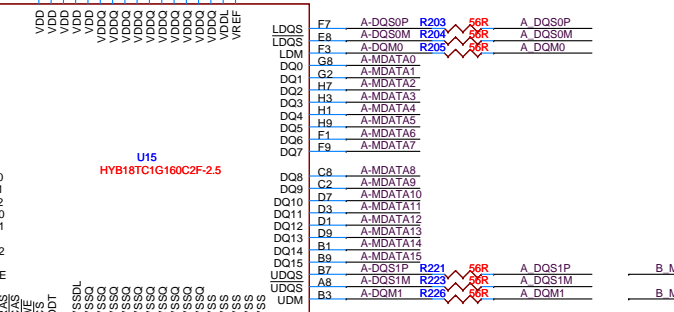
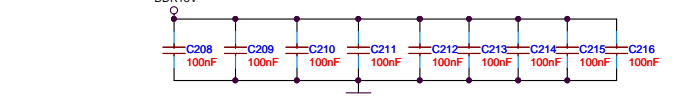
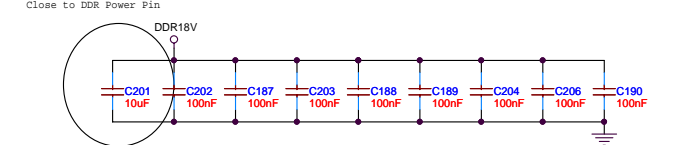
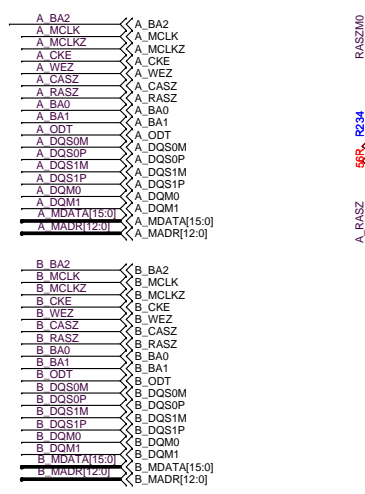
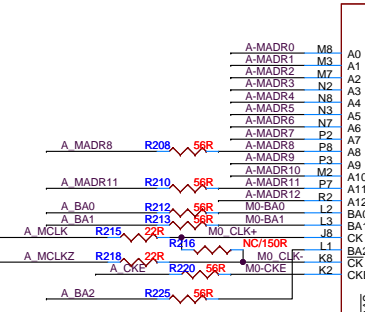
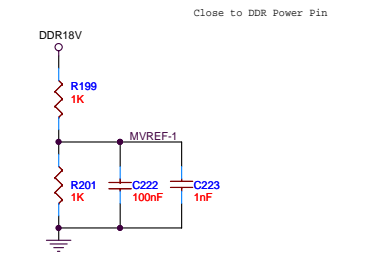
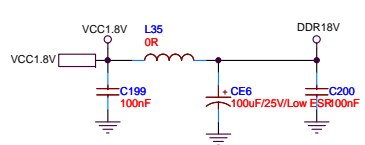
+3.3V STANDBY POWER



TUNER POWER

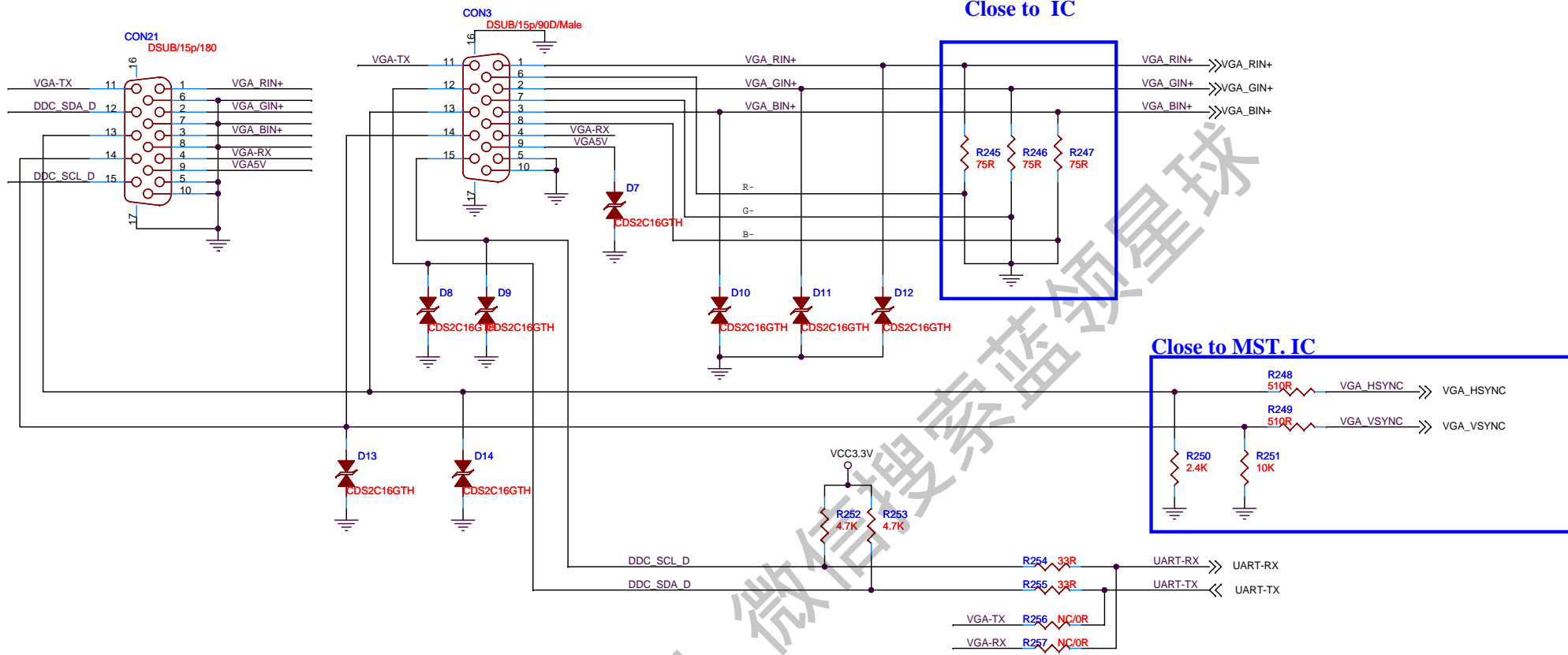






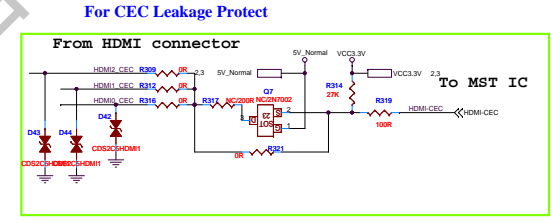
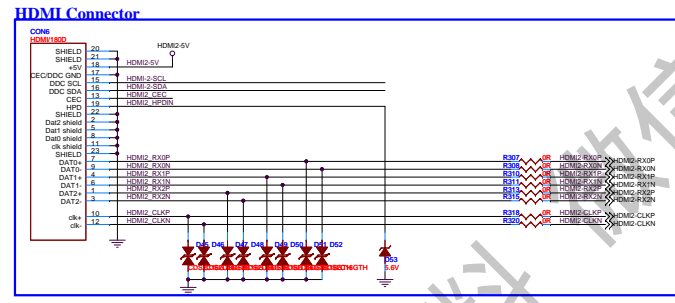
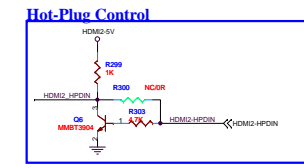
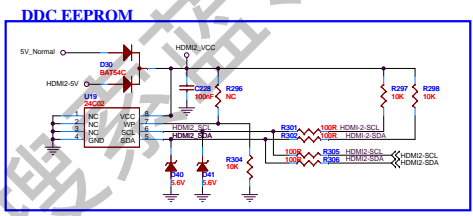
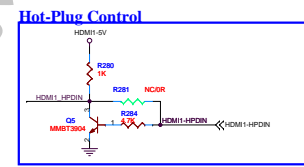
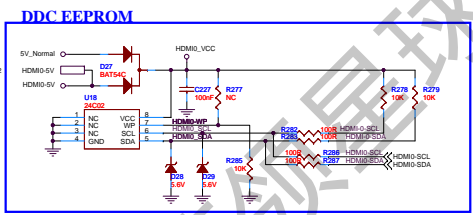
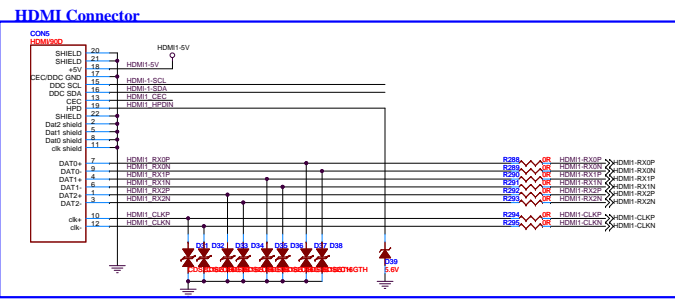
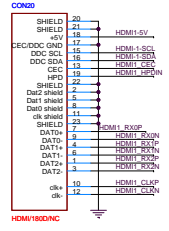
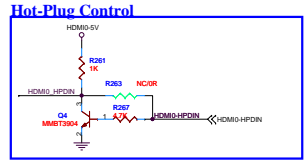
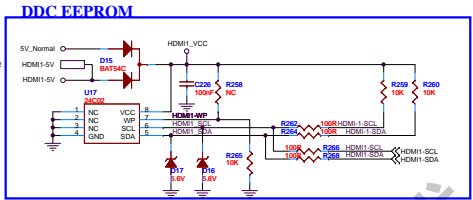
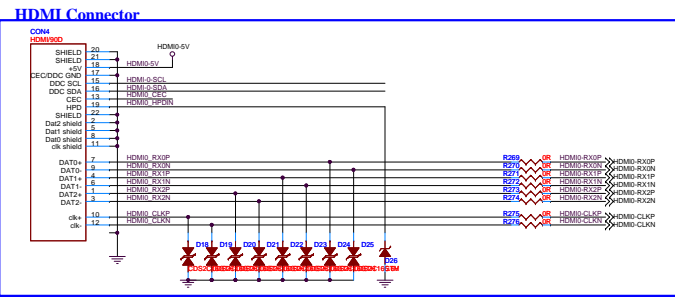
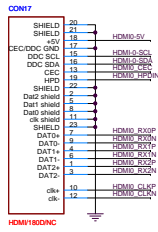
Check demo board brand for which package ??

Title		
MSD389I		
Size	Document Number	Rev
Custom	DDR2_32Bit	1.0
Date:	Wednesday, December 23, 2009	Sheet 3 of 16



Title		MSD389I	
Size	Document Number	Rev	
Custom	VGA	1.0	
Date:	Wednesday, December 23, 2009	Sheet	4 of 16

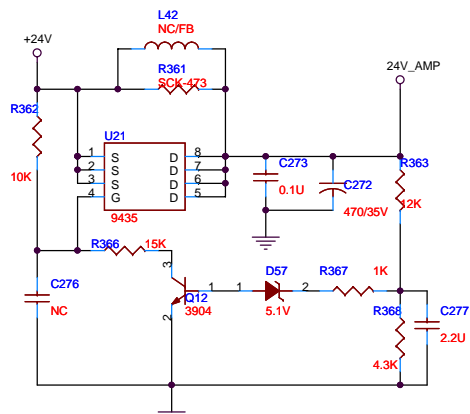
获取更多资料



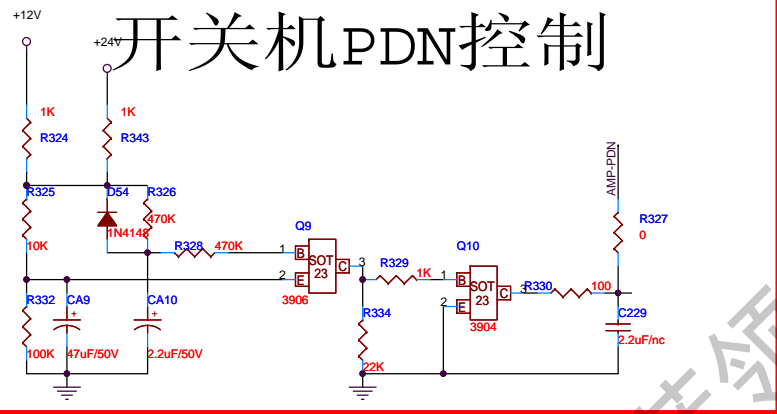
File	MSD3891	Rev	1.0
Doc	Document Number		
Client			
Doc	MSD3891	Doc	HDMI Interface
Date	Friday, December 25, 2009	Sheet	5 of 16



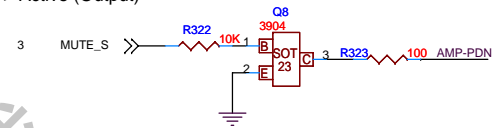
增加消除开机冲击声



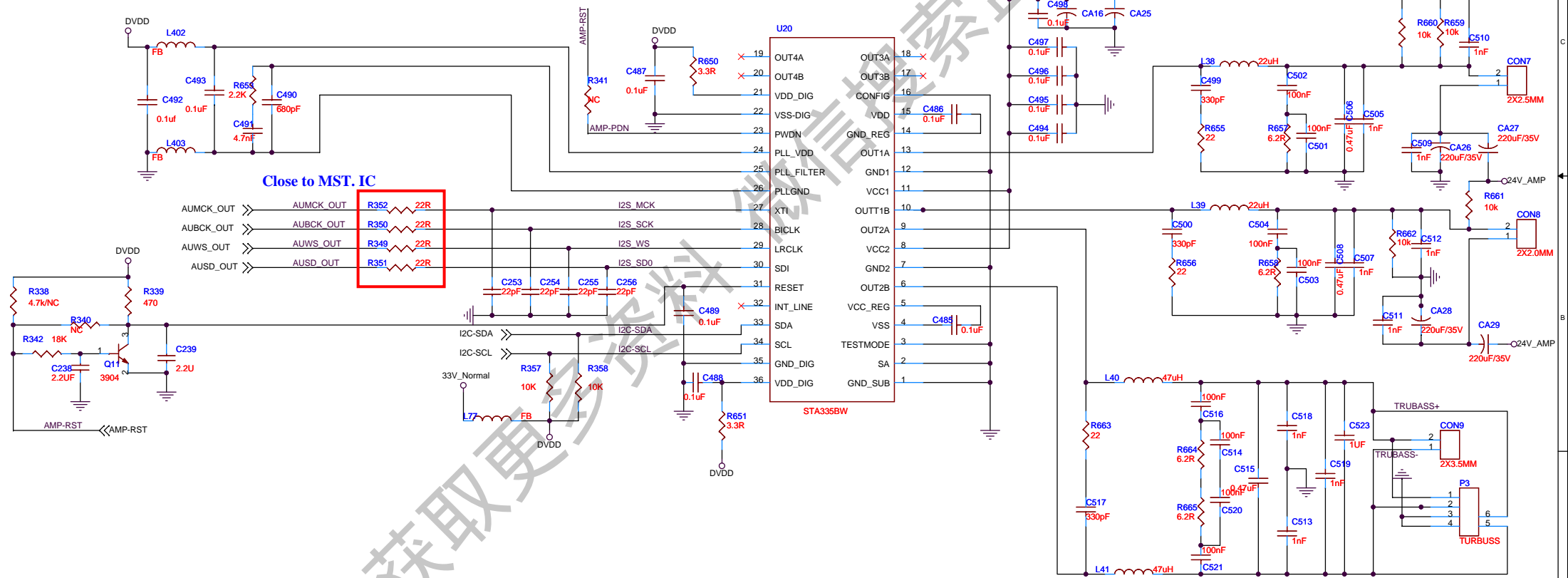
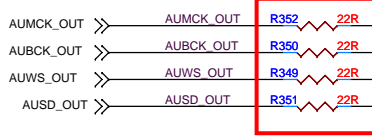
开关机PDN控制



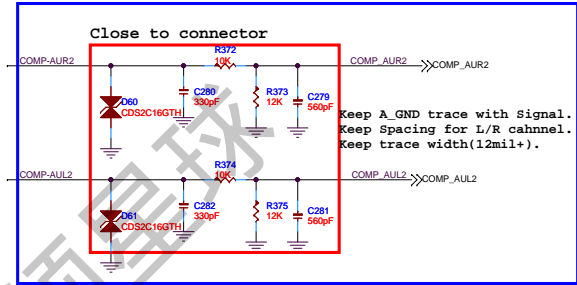
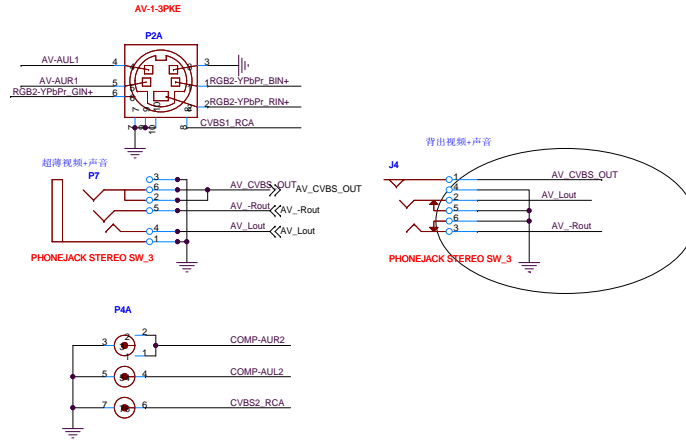
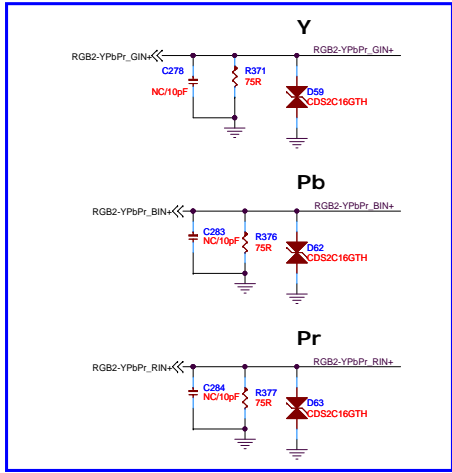
HIGH--> MUTE (Output Hi-Z)
LOW--> Active (Output)



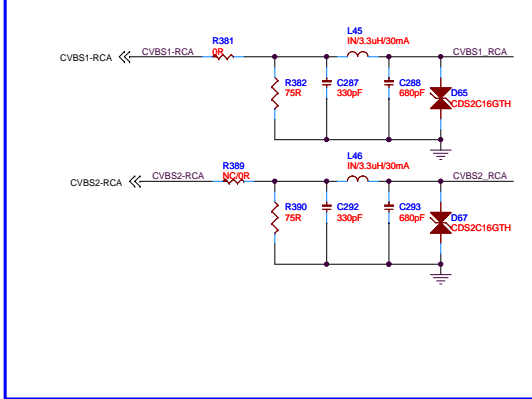
Close to MST. IC



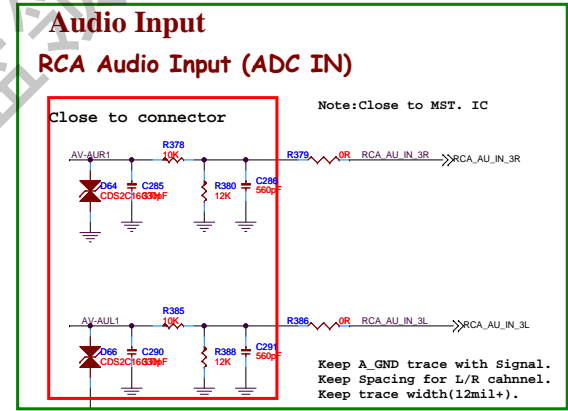
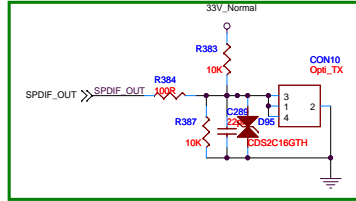
Title	<Title>		Rev	<Rev Code>
Size	A3	Document Number	<Doc>	
Date:	Wednesday, December 23, 2009	Sheet	6	of 16



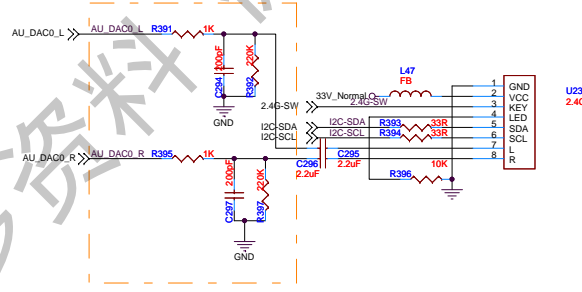
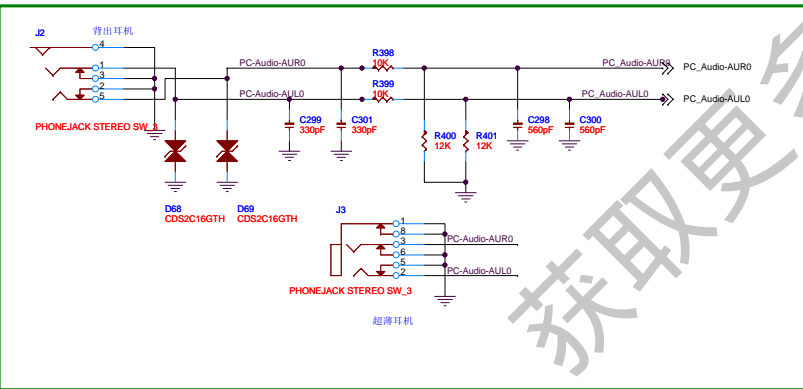
CVBS Input

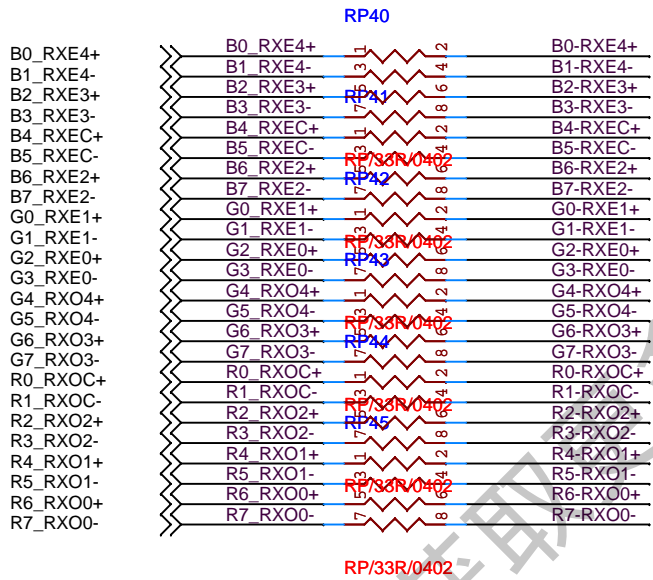
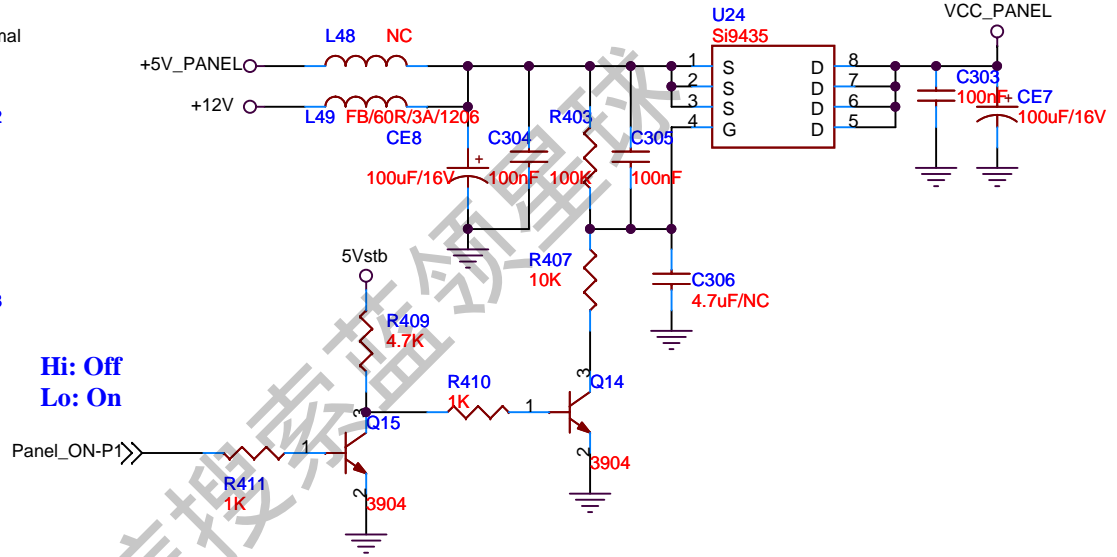
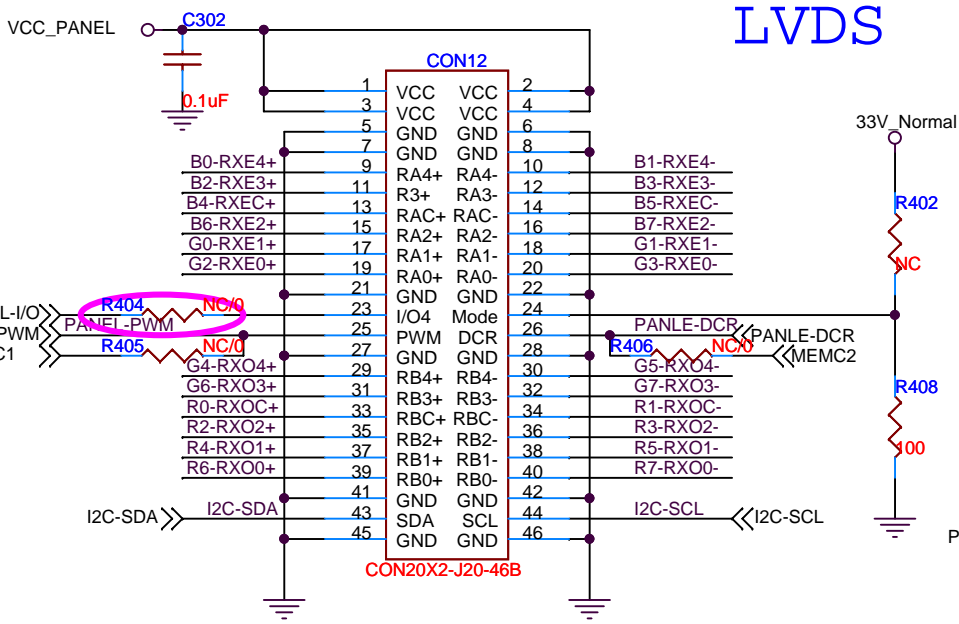


SPDIF OUT



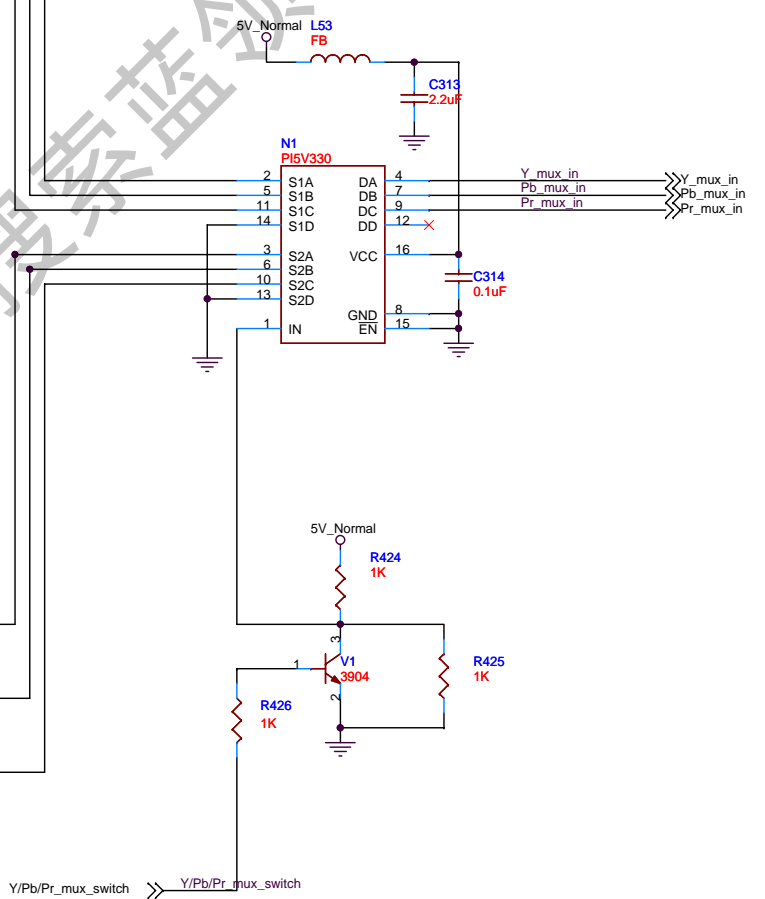
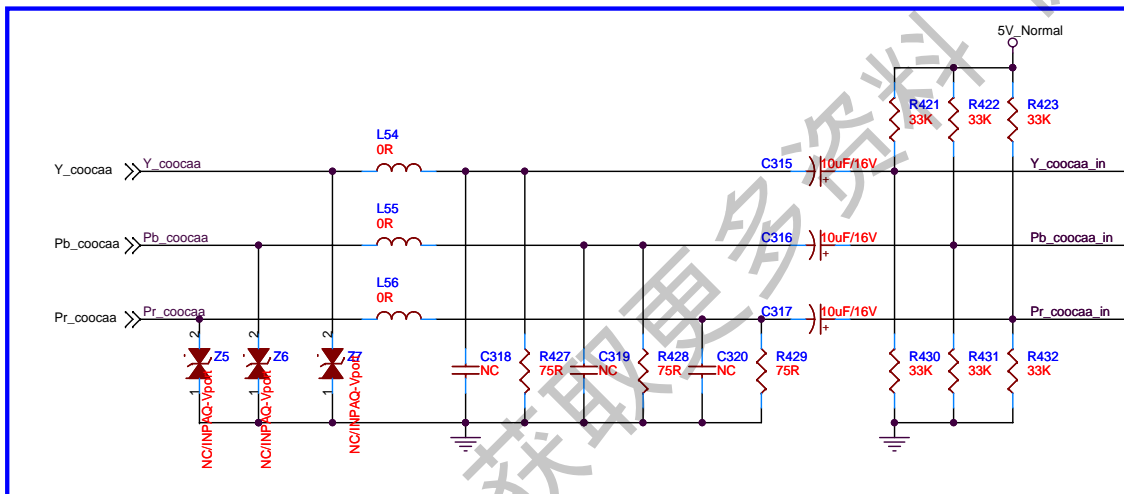
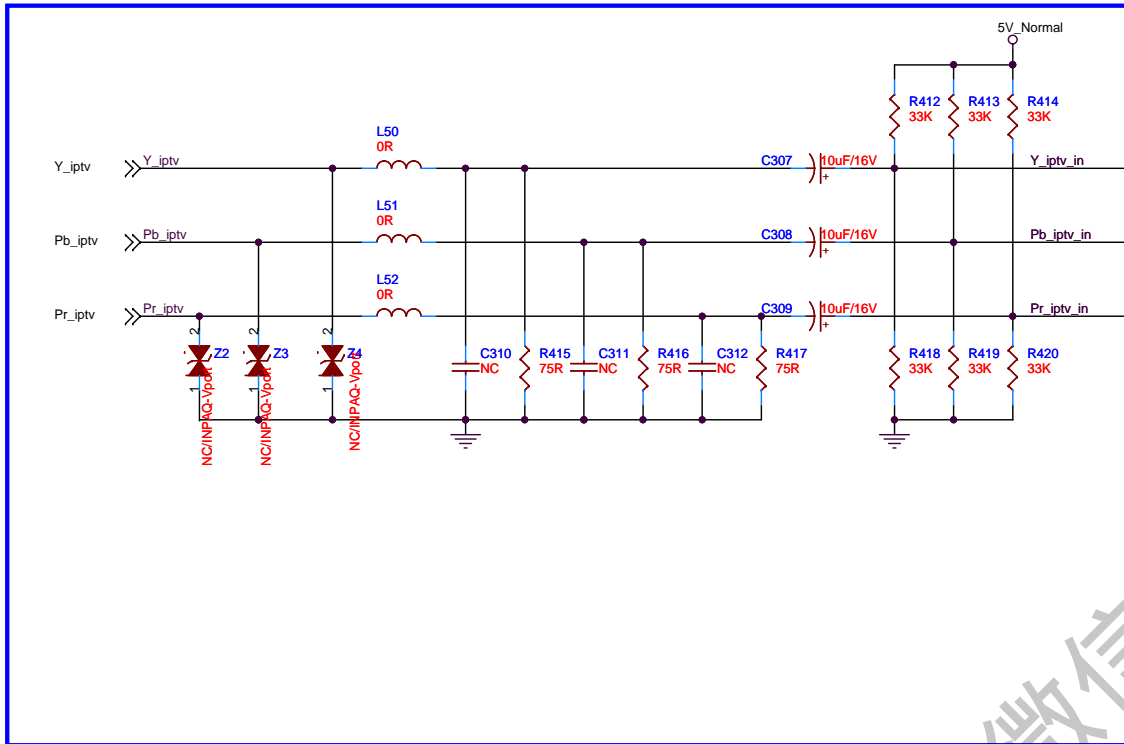
PC Audio Earphone Input



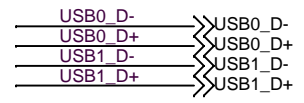
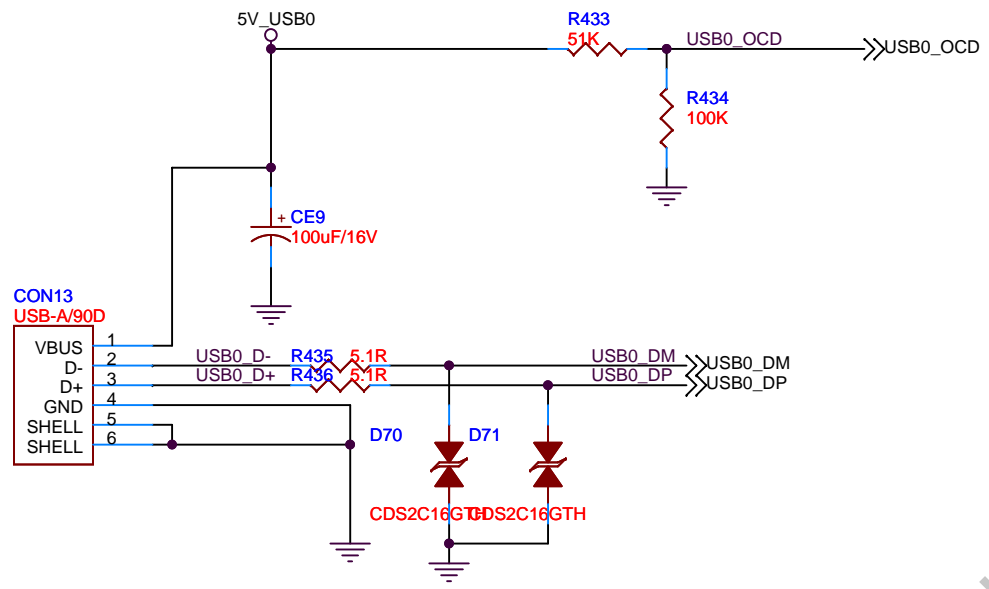


Title		
xxx6_MSD3A10HX_Socket board		
Size	Document Number	Rev
Custom	Panel Interface	1.0
Date:	Wednesday, December 23, 2009	Sheet 8 of 16

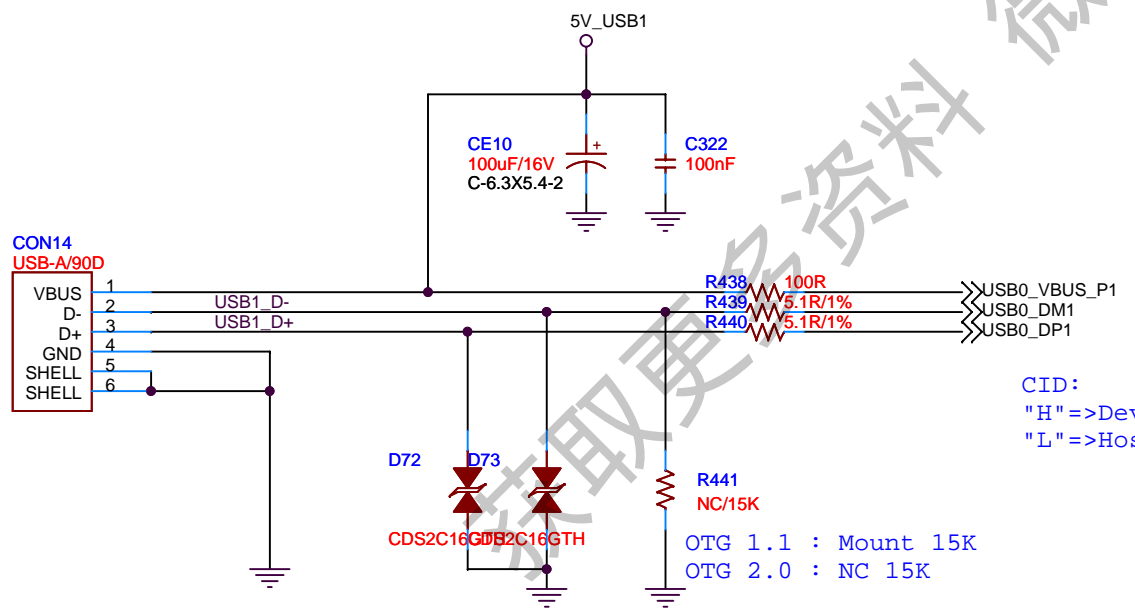
2nd YPbPr INPUT



Title		<Title>
Size	Document Number	Rev
Custom	<Doc>	<RevCode>
Date:	Wednesday, December 23, 2009	Sheet 9 of 16



USB Power Control :
 High : Power ON
 Low : Power OFF



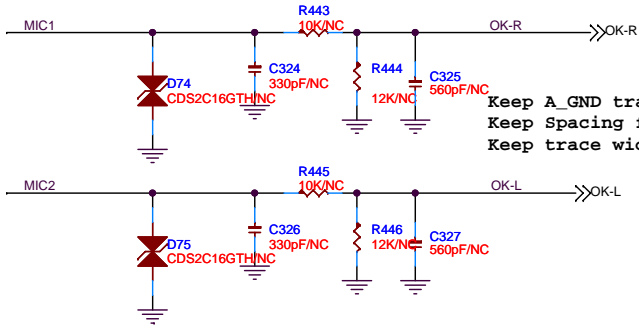
USB OTG support mode
 1. "Host": 5V->Conn
 2. "Device" :
 Self-Pwr: Conn-5V(NC), 5V->Sys&Chip
 Bus-Pwr: Conn-5V->Sys&Chip (<500mA)
 *Detect: By VBUS pin (int. GPIO pin)
 =>Enable DP pull-up 3.3V if Host connect

CID:
 "H"=>Device
 "L"=>Host

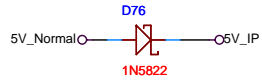
OTG 1.1 : Mount 15K
 OTG 2.0 : NC 15K

Title		
MSD389I		
Size	Document Number	Rev
Custom	USB	1.0
Date:	Wednesday, December 23, 2009	Sheet 10 of 16
	2	1

Close to connector

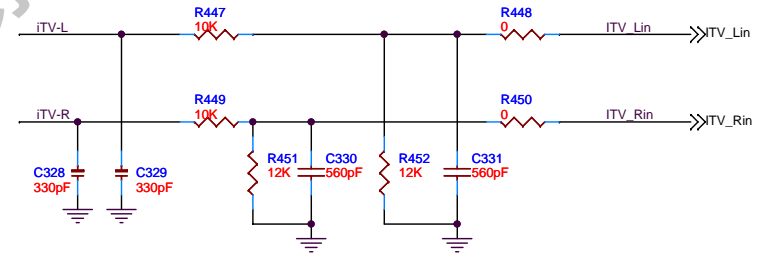
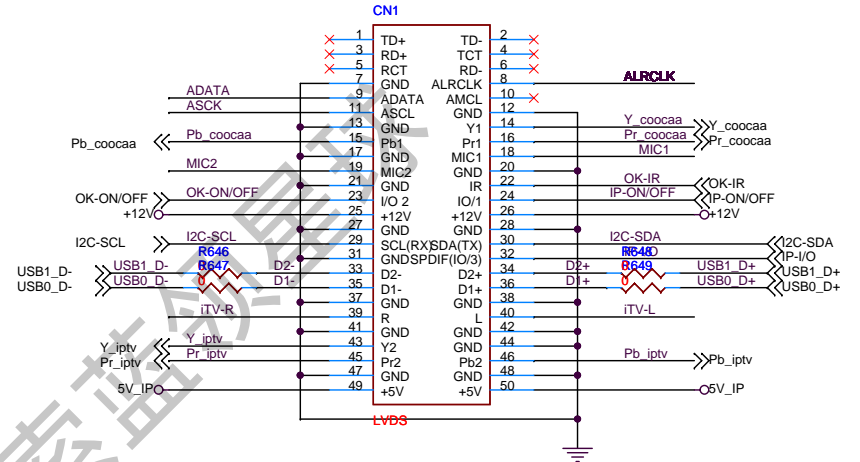
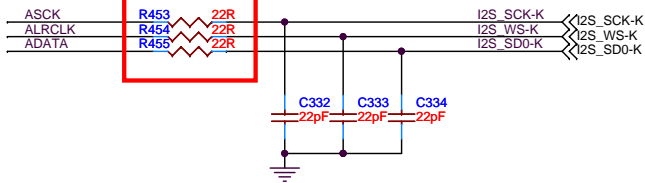


Keep A_GND trace with Signal.
Keep Spacing for L/R cahnnel.
Keep trace width(12mil+).



Transfer I2S for audio output

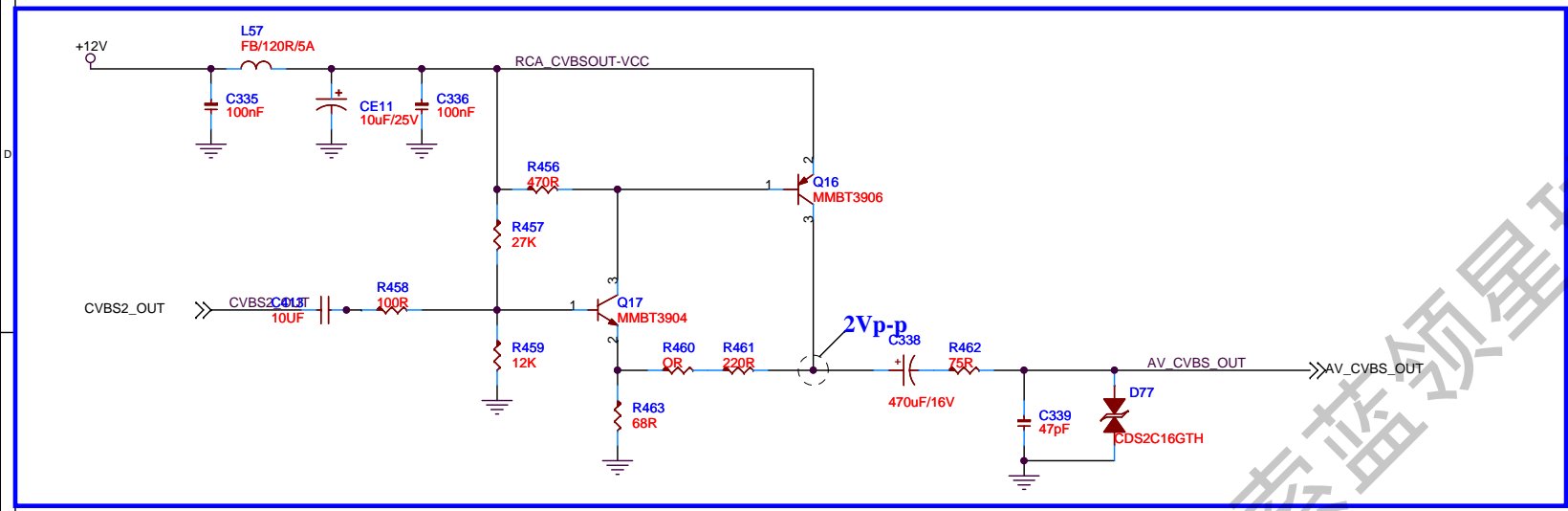
Close to connector



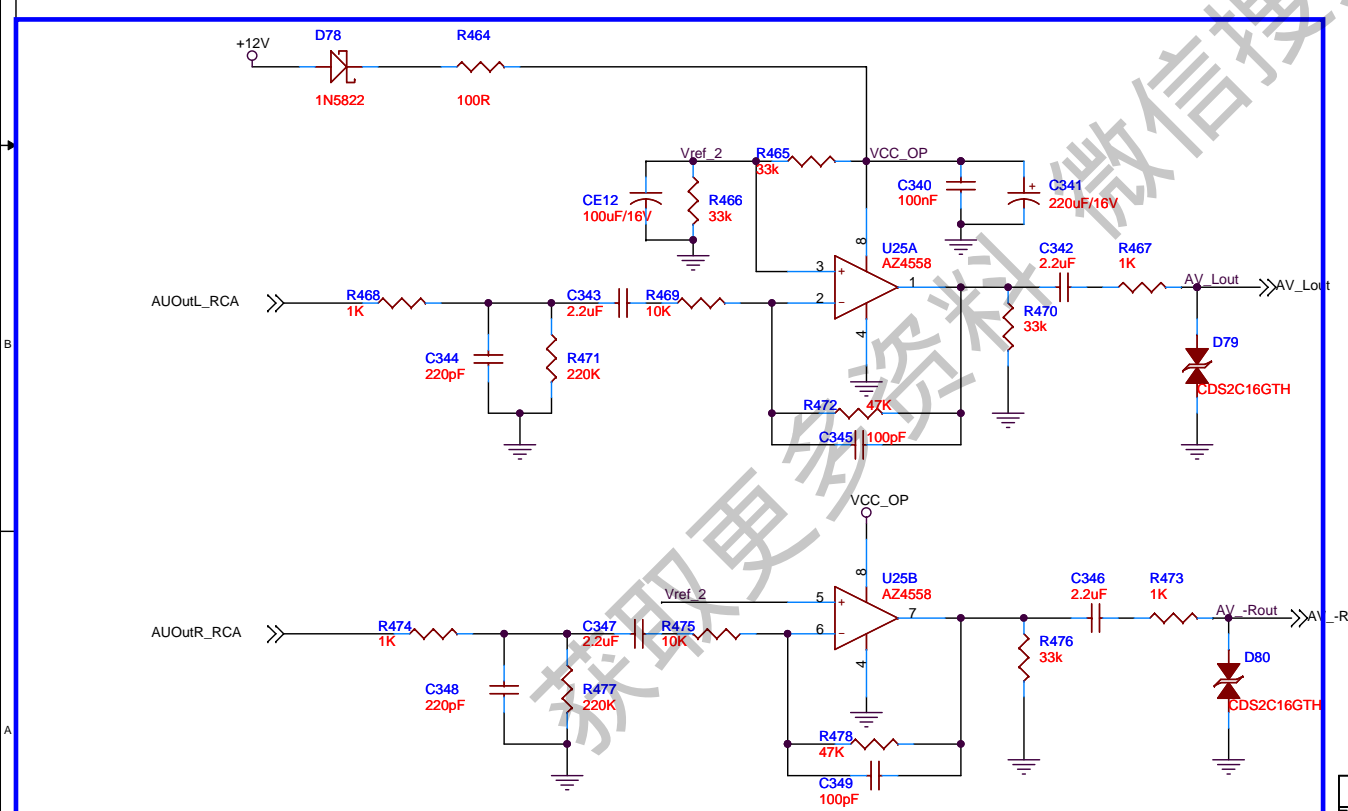
Title		<Title>
Size	Document Number	Rev
B	<Doc>	<RevCode>
Date:	Wednesday, December 23, 2009	Sheet 11 of 16

获取更多资料 微信搜索 索盟

RCA CVBS Output



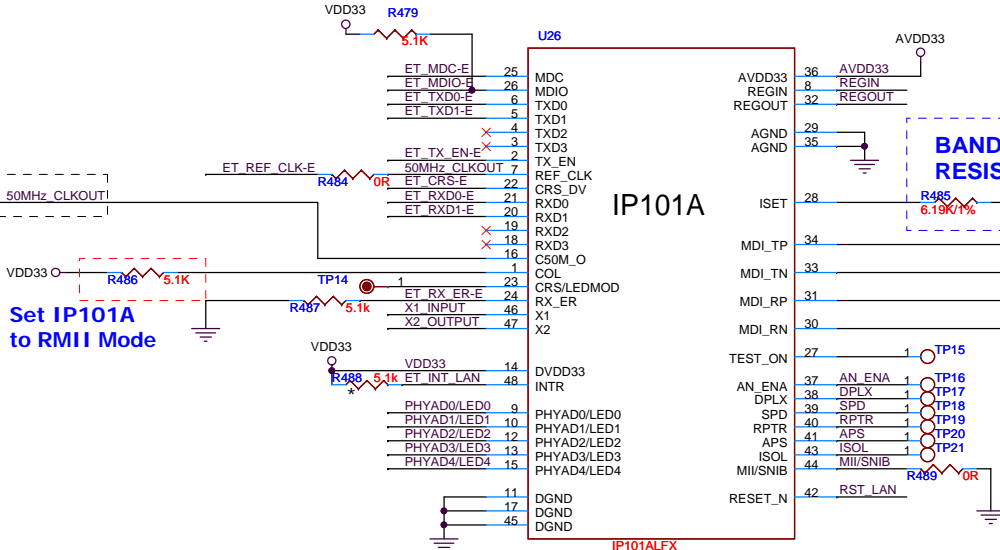
AUDIO OUTPUT



Near MST.IC

Ground in the middle of the L/R

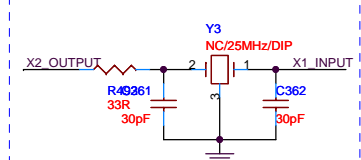
Title		
<Title>		
Size	Document Number	Rev
Custom	<Doc>	<Rev Code>
Date:	Wednesday, December 23, 2009	Sheet 12 of 16



Set IP101A to RMI Mode

50MHz CLOCK OUT Generate by IP101A

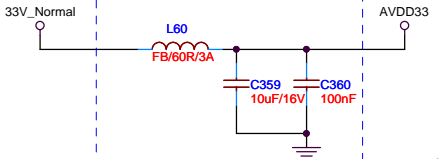
use 25M crystal



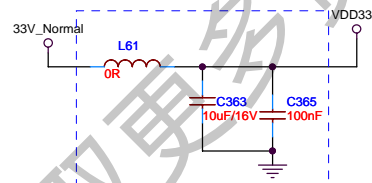
CRYSTAL as close as to chip

- ET_MDC-E <<> ET_MDC-E
- ET_MDIO-E <<> ET_MDIO-E
- ET_TXD0-E <<> ET_TXD0-E
- ET_TXD1-E <<> ET_TXD1-E
- ET_TX_EN-E <<> ET_TX_EN-E
- ET_REF_CLK-E <<> ET_REF_CLK-E
- ET_CRSE-E <<> ET_CRSE-E
- ET_RXD0-E <<> ET_RXD0-E
- ET_RXD1-E <<> ET_RXD1-E

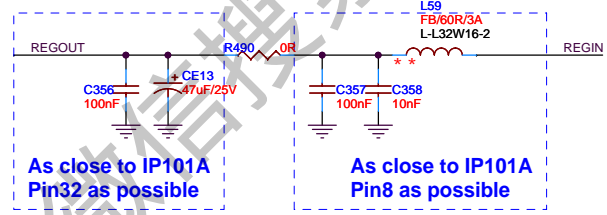
ICC < 200mA



As close to IP101A Pin36 as possible



As close to IP101A Pin14 as possible



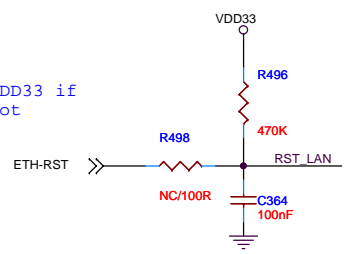
As close to IP101A Pin32 as possible

As close to IP101A Pin8 as possible

** Bead should be placed as close to IP101A as possible and in the same side as IP101A.

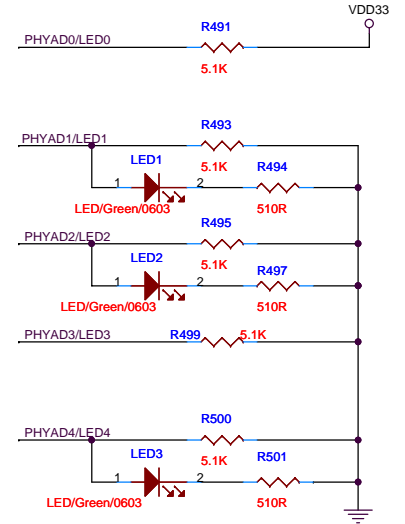
* : Optional ,but recommended

Pin48 could be short VDD33 if interrupt funtion is not used.



LED and PHY address Configuration

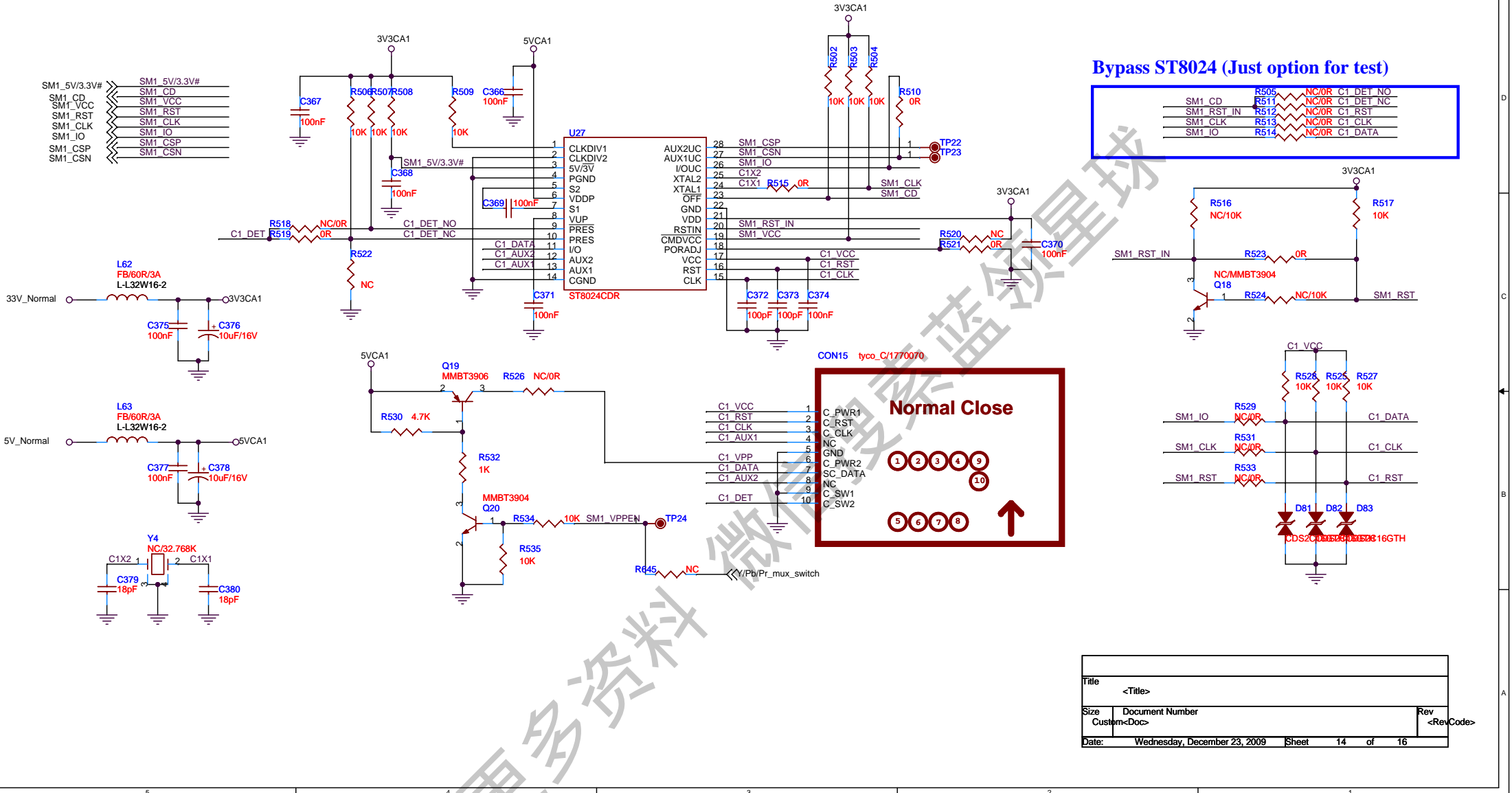
This schematic sets PHY address to 00001b.



LED0	LED1	LED2	LED3	LED4
Link	Dupx	10Act	100Act	COL

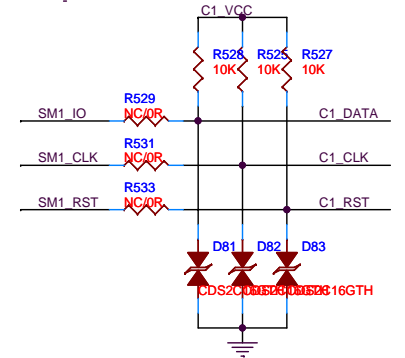
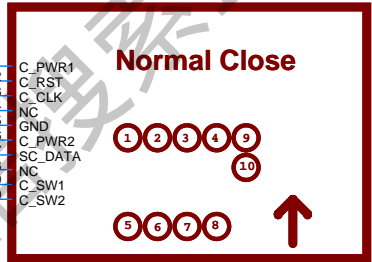
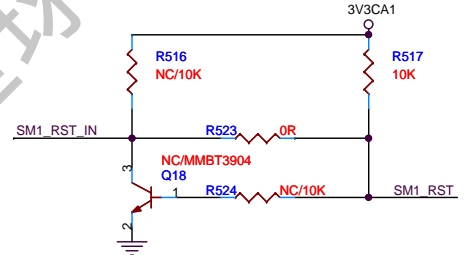
Title	<Title>		Rev	<Rev>
Size	Document Number			
Custom	<Doc>			
Date:	Wednesday, December 23, 2009	Sheet	13	of 16

SM1_5V/3.3V#	SM1_5V/3.3V#
SM1_CD	SM1_CD
SM1_VCC	SM1_VCC
SM1_RST	SM1_RST
SM1_CLK	SM1_CLK
SM1_IO	SM1_IO
SM1_CSP	SM1_CSP
SM1_CSN	SM1_CSN



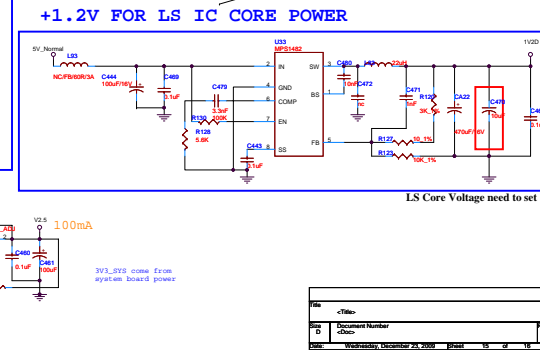
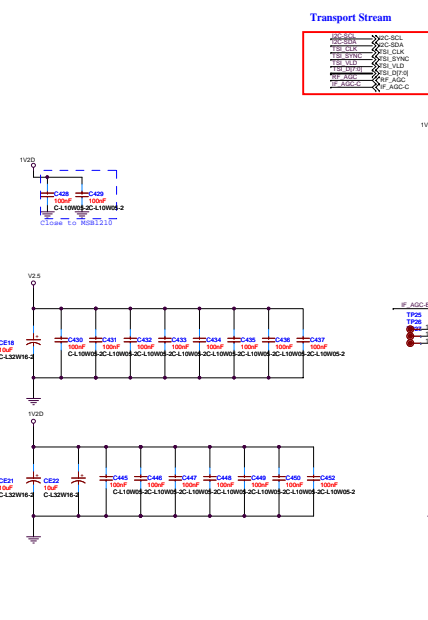
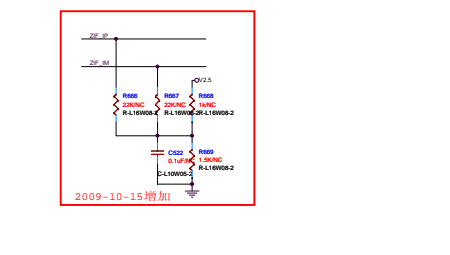
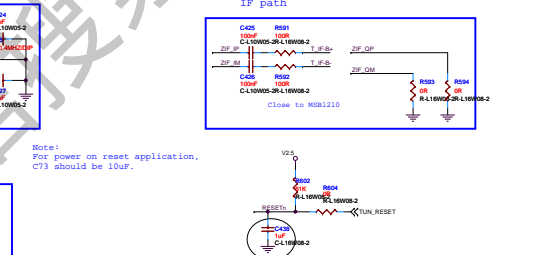
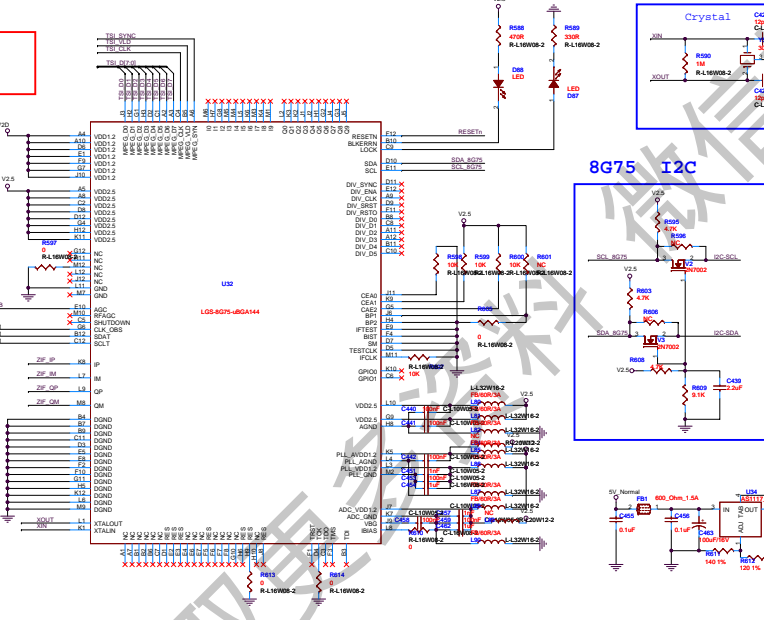
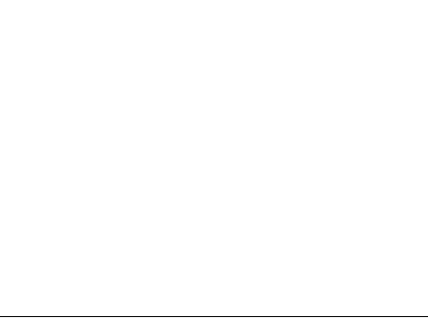
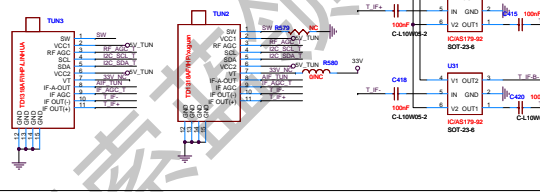
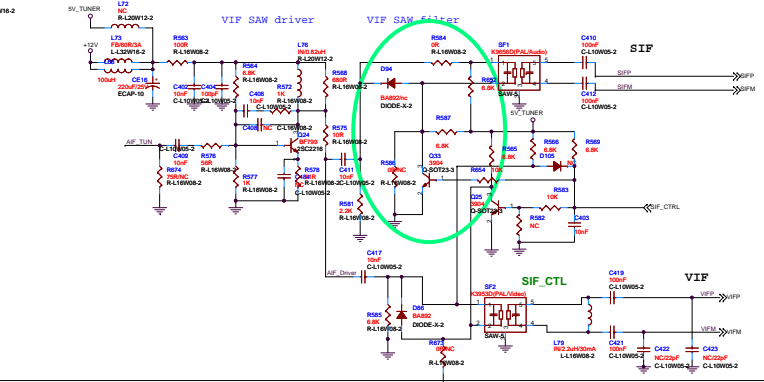
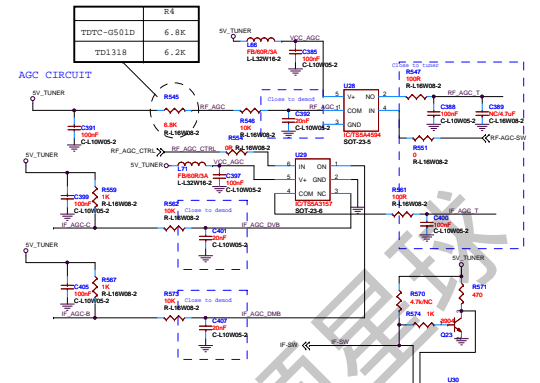
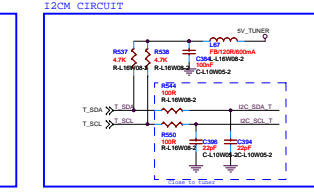
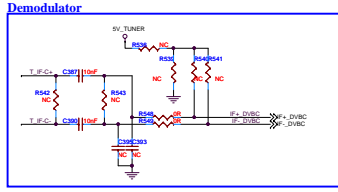
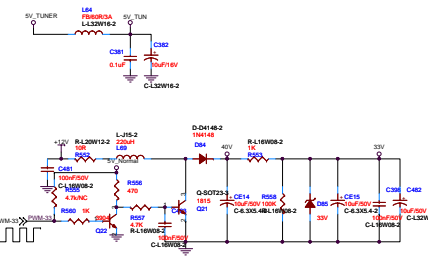
Bypass ST8024 (Just option for test)

SM1_CD	R505	NC/0R	C1_DET_NO
SM1_RST_IN	R511	NC/0R	C1_DET_NC
SM1_CLK	R513	NC/0R	C1_CLK
SM1_IO	R514	NC/0R	C1_DATA



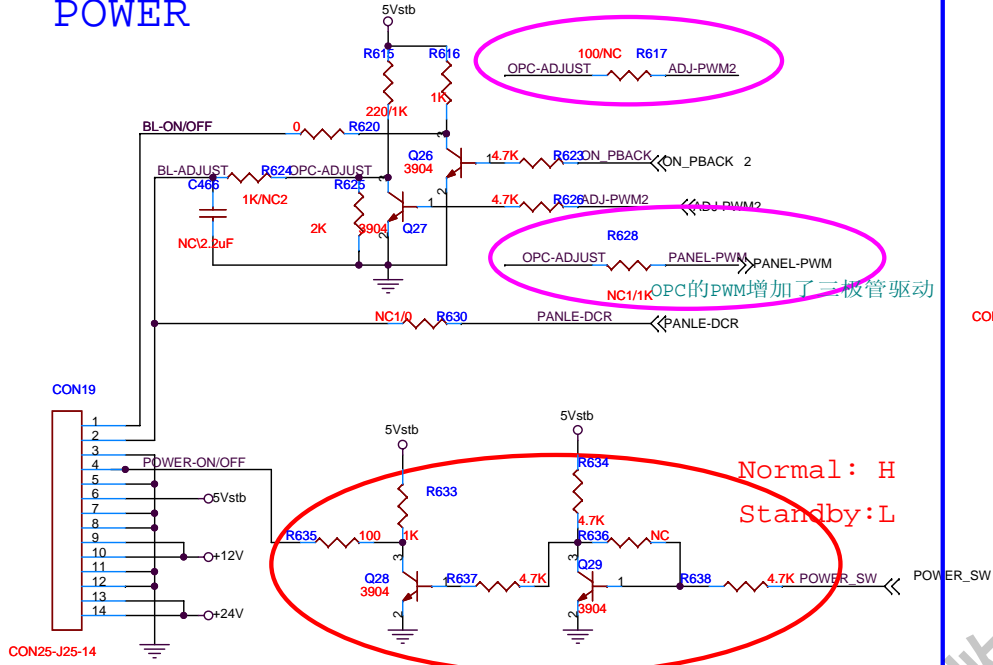
Title	<Title>	
Size	Document Number	Rev
Date:	Wednesday, December 23, 2009	Sheet 14 of 16

获取更多资料

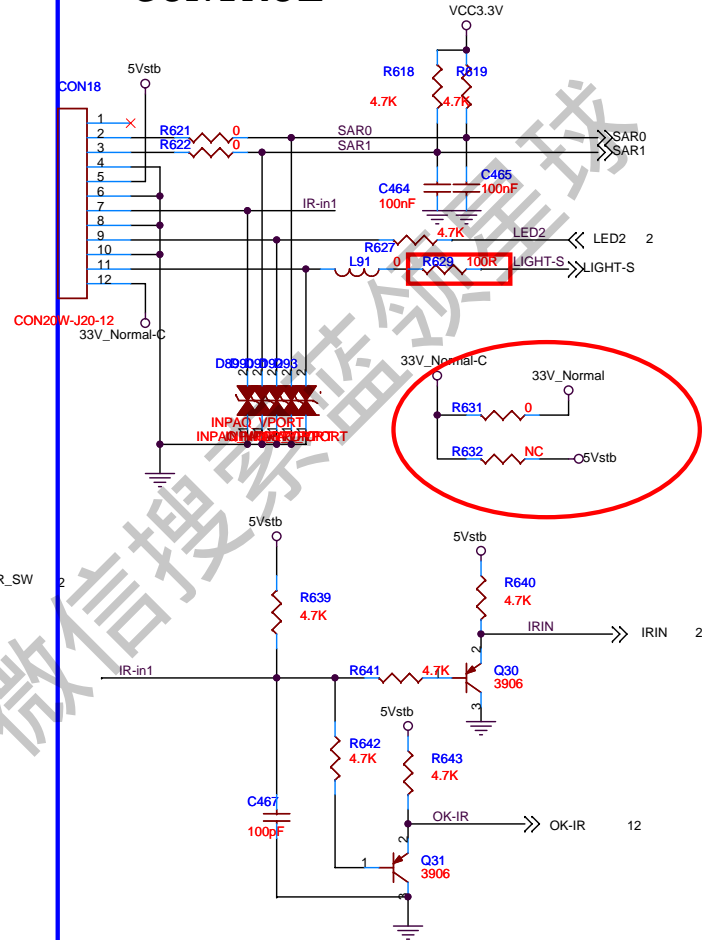


Rev	Description	Date
1	Initial Release	2009-10-15
2	2009-10-15增加	2009-10-15

POWER



CONTROL



获取更多资料

Title		<Title>
Size	Document Number	Rev
B	<Doc>	<RevCode>
Date:	Wednesday, December 23, 2009	Sheet 16 of 16