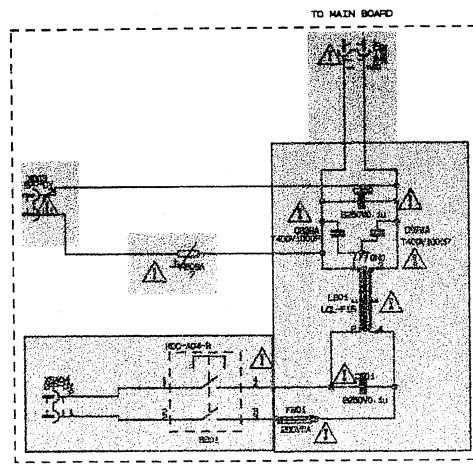
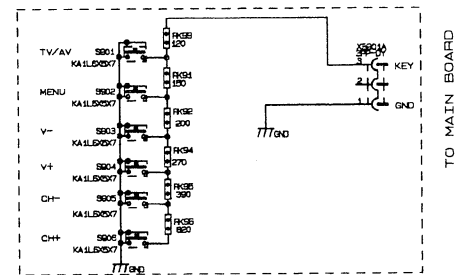


PF2181DV 电路图

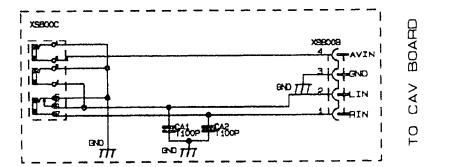
POWERBOARD JUC7.820.1036



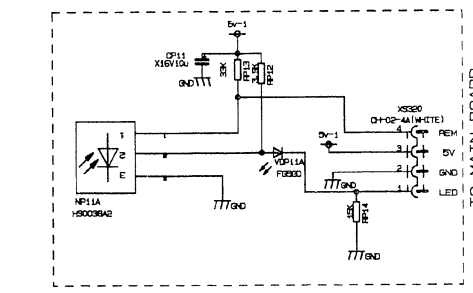
TV-K BOARD JUC7.820.1211



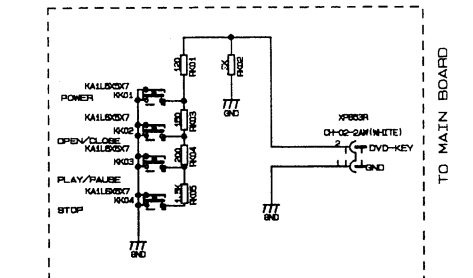
CAV BOARD JUC7.820.1134



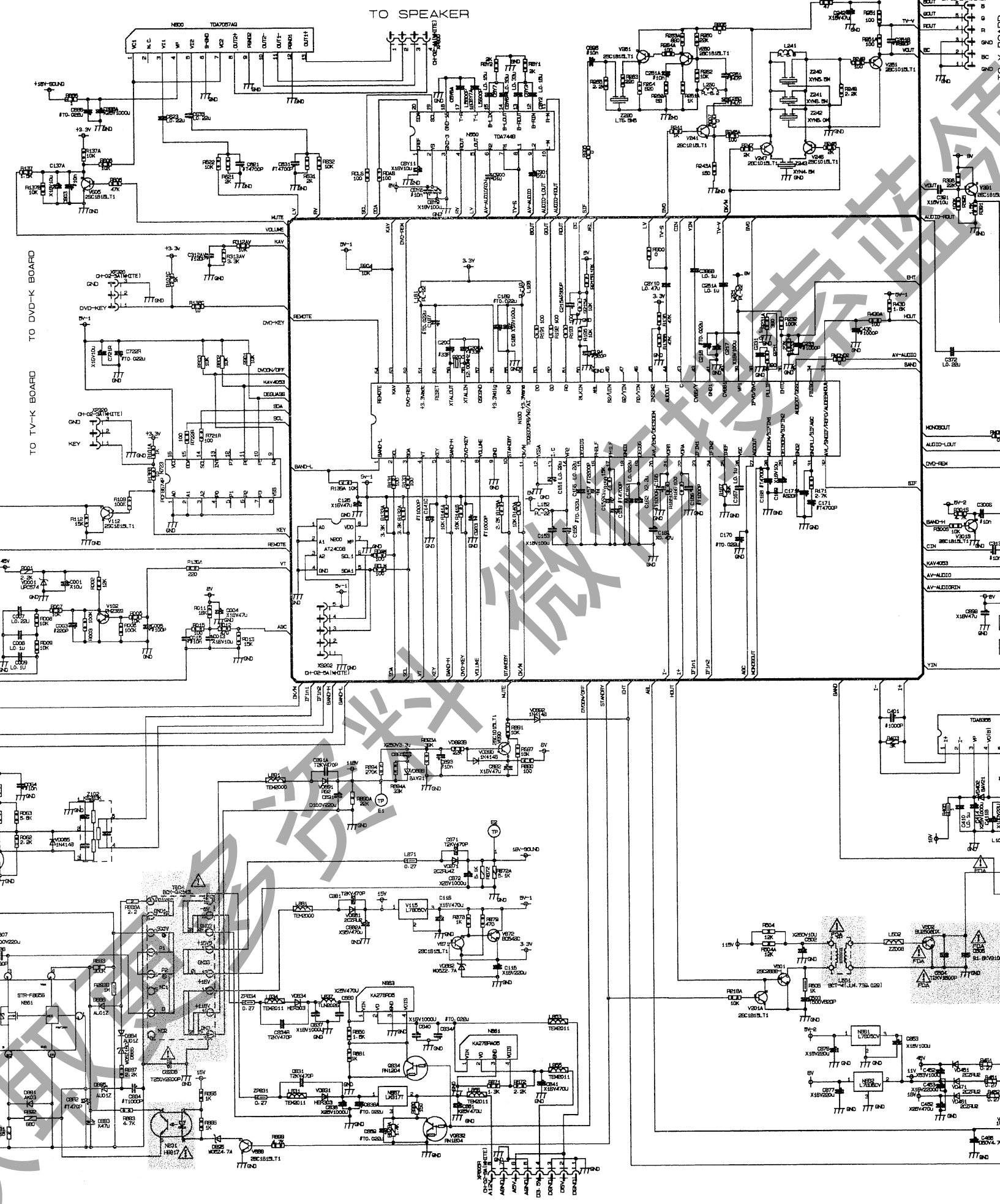
KZ BOARD JUC7.820.1130



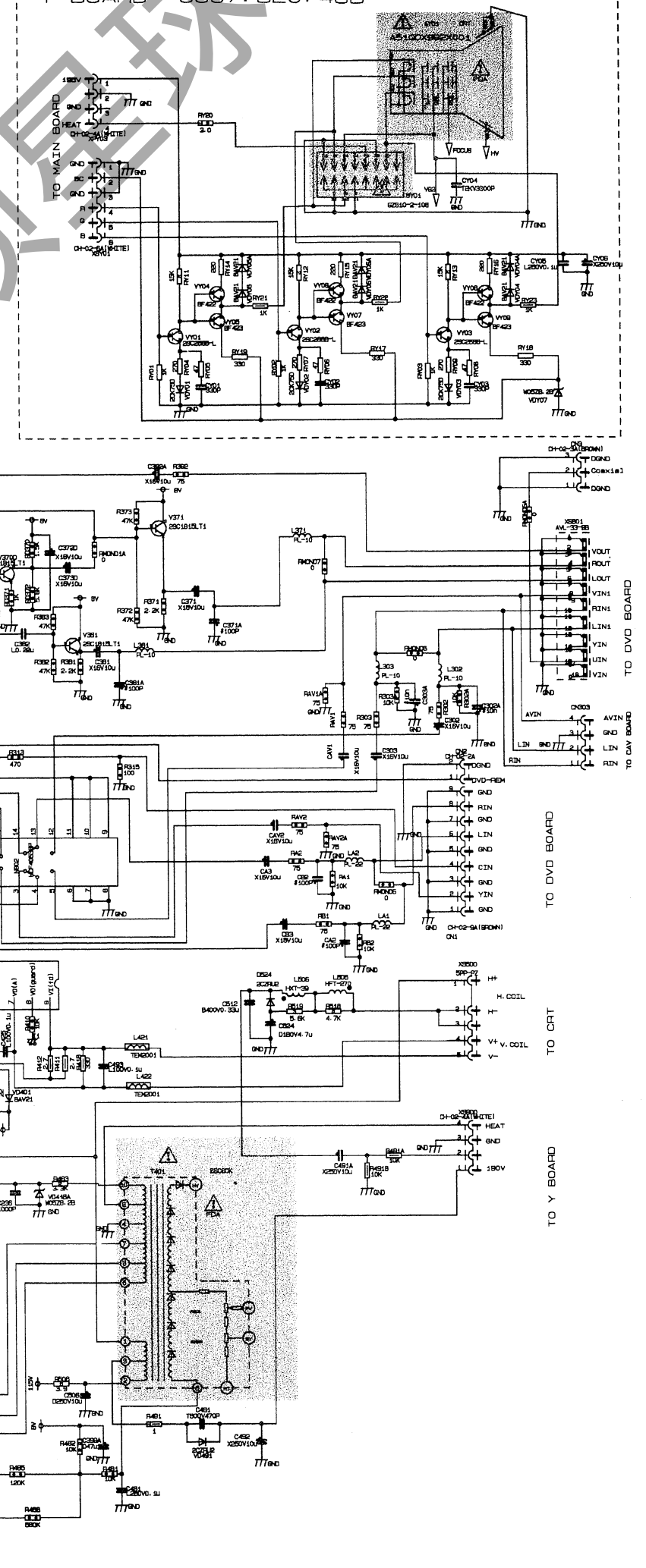
DVD-K BOARD JUC7.820.1210



MAIN BOARD JUC7.820.834



Y BOARD JUC7.820.468



1. △ 凡标有该标记者在整机安全性和性能上有特殊要求，请一定使用原规格型号的元器件。

2. + 热地 0 冷地

此图仅供参考，电路更改恕不预先通知