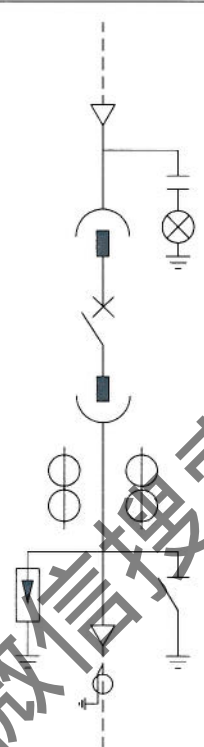


一次系统图



断路器	VMAX-12/630-25	1R
电流互感器	LZZQB8-10A/150b/2S 0.5/5P10 xx/5A	2R
接地开关	ST1-UG	1R
避雷器	YH2.5WD	3R
零序电流互感器	LJ-φ75	1R
带电显示器	DXN-10T	1R

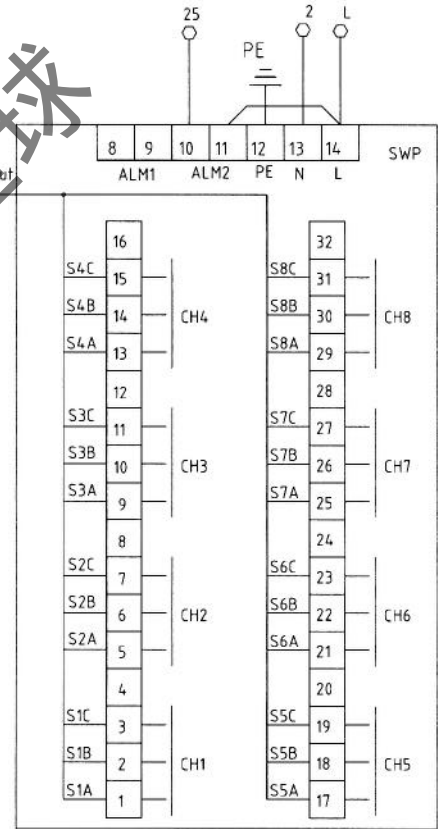
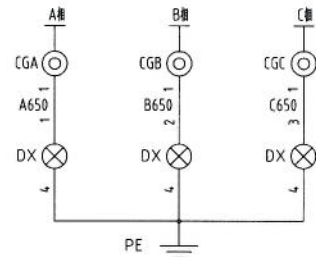
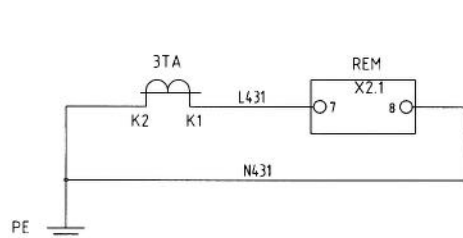
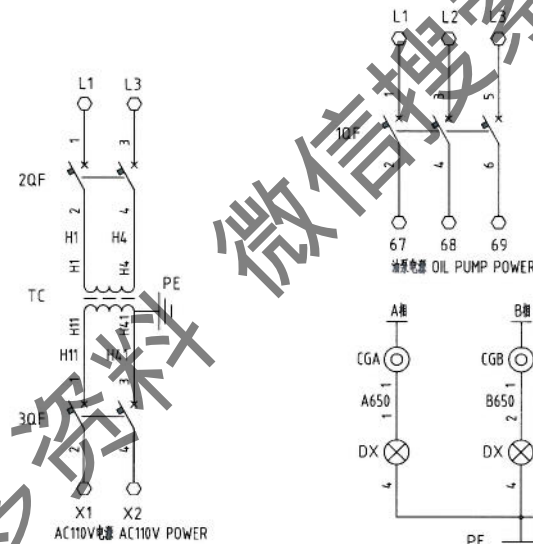
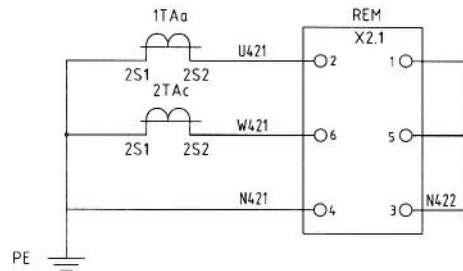
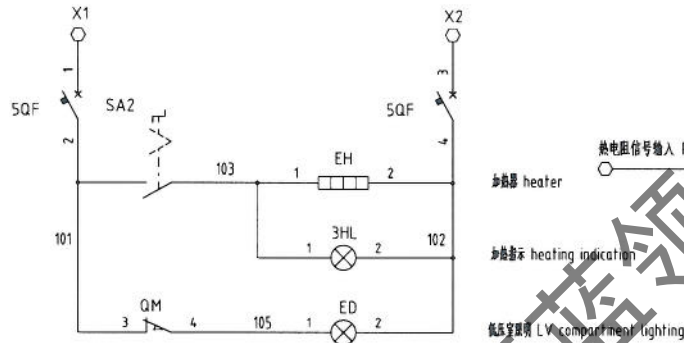
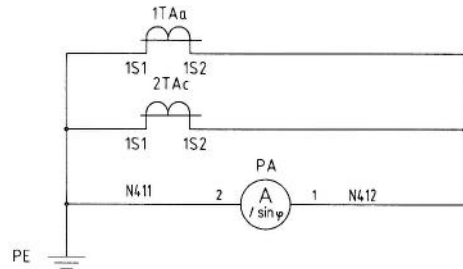
PRIMARY DIMENSIONS ARE ISO STANDARD MILLIMETER, IMPERIAL INCH DIMENSIONS ARE SHOWN IN BRACKETS.  
第一尺寸是公制,第二尺寸是英制

"ALL PROPRIETARY RIGHTS IN THE SUBJECT MATTER HEREOF ARE RESERVED AND NO PERMISSION IS GRANTED TO REPRODUCE THIS PRINT IN WHOLE OR IN ANY PART, OR DISCLOSE ANY OF THE INFORMATION UPON IT TO OTHERS WITHOUT WRITTEN RELEASE BY JOHNSON CONTROLS."  
"版权所有,未经江森自控书面授权,禁止以任何形式复制和泄露与图纸相关的内容和信息"

	SIGN (签名)	DATE (日期)
DESIGN (设计)	陈树光	2010-08-26
DRAFT (绘图)	陈树光	2010-08-26
CHECK (校核)	李敏华	2010-08-26
STD. (标准化)	李敏华	2010-08-26
APPROVAL (审核)	王晨	2010-08-26
COUNTERSIGN (会签)		
MANUFACTURE (工艺)	王晨	2010-08-26

中压柜直接启动柜  
一次系统图 国内  
MV A-I-L STARTER  
SCHEMATIC DIAGRAM DOMESTIC

DRAW FORMAT 图样标记			WEIGHT 重量(kg)	SCALE 比例	
B				N.T.S	
SHEET 1 OF 1 (共 1 页 第 1 页)					
DRAWING NUMBER (图号)					
035W22538-900					



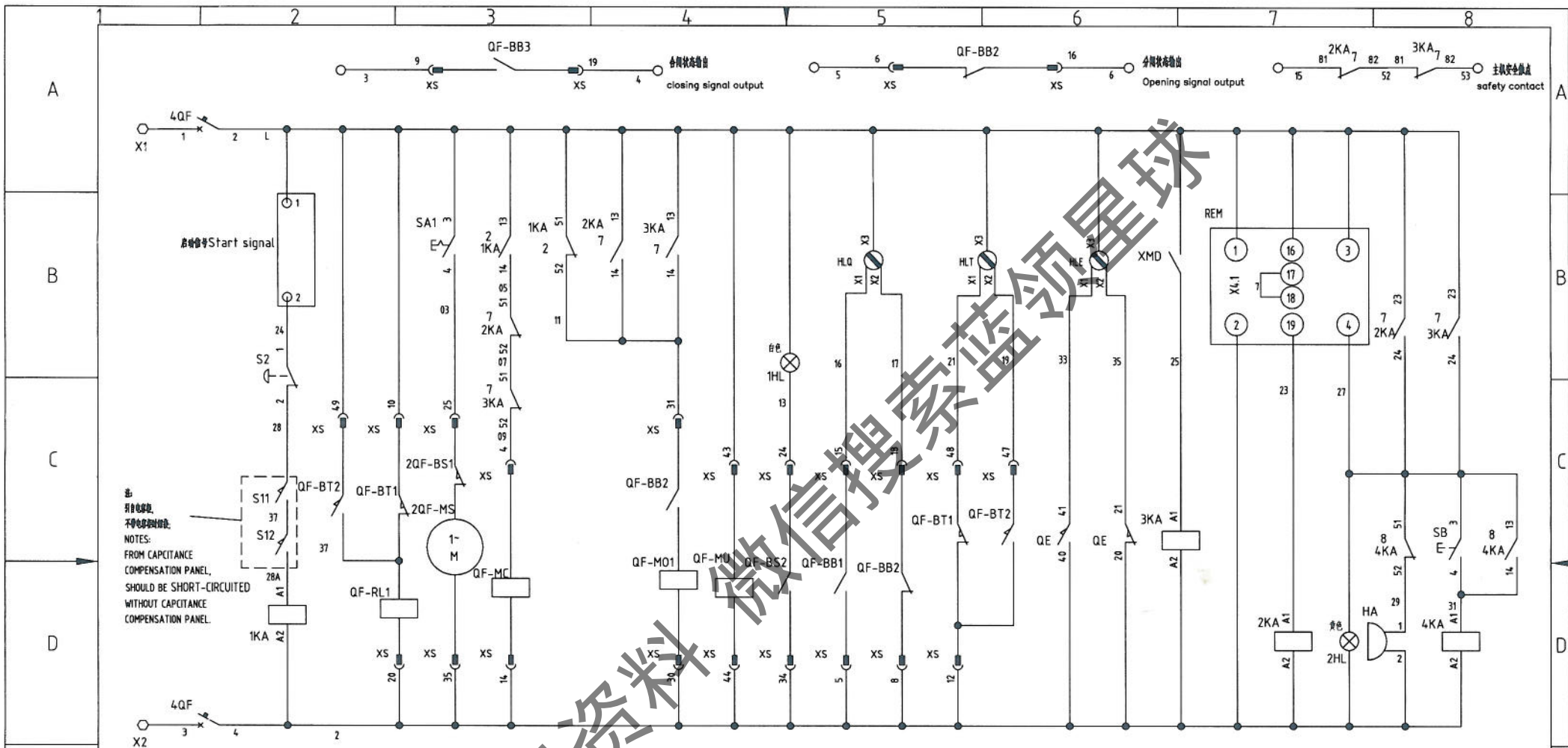
PRIMARY DIMENSIONS ARE ISO STANDARD MILLIMETER, IMPERIAL INCH DIMENSIONS ARE SHOWN IN BRACKETS.  
第一尺寸是公制,第二尺寸是英制

"ALL PROPRIETARY RIGHTS IN THE SUBJECT MATTER HEREOF ARE RESERVED AND NO PERMISSION IS GRANTED TO REPRODUCE THIS PRINT IN WHOLE OR IN ANY PART, OR DISCLOSE ANY OF THE INFORMATION UPON IT TO OTHERS WITHOUT WRITTEN RELEASE BY JOHNSON CONTROLS."  
"版权所有,未经江苏自控书面授权,禁止以任何形式复制和泄露与图纸相关的内容和信息"

DESIGN (设计)	SIGN (签名)	DATE (日期)
唐利光	唐利光	2010/07/16
DRAFT (绘图)	唐利光	2010/07/16
CHECK (校核)	李敏华	2010/07/21
STD (标准化)	李敏华	2010/07/21
APPROVAL (审核)	王磊	2010/07/21
COUNTERSIGN (会签)		
MANUFACTURE (工艺)	单广伟	2010/07/20

Unigear550 直接启动柜原理图  
SCHEMATIC UNIGEAR550 ACROSS THE LINE

DRAWN BY (制图)			WEIGHT (重量)			SCALE (比例)		
B			/			N.T.S		
SHEET 1 OF 2 (共 2 页 第 1 页)								
DRAWING NUMBER (图号) 035W22538-000								



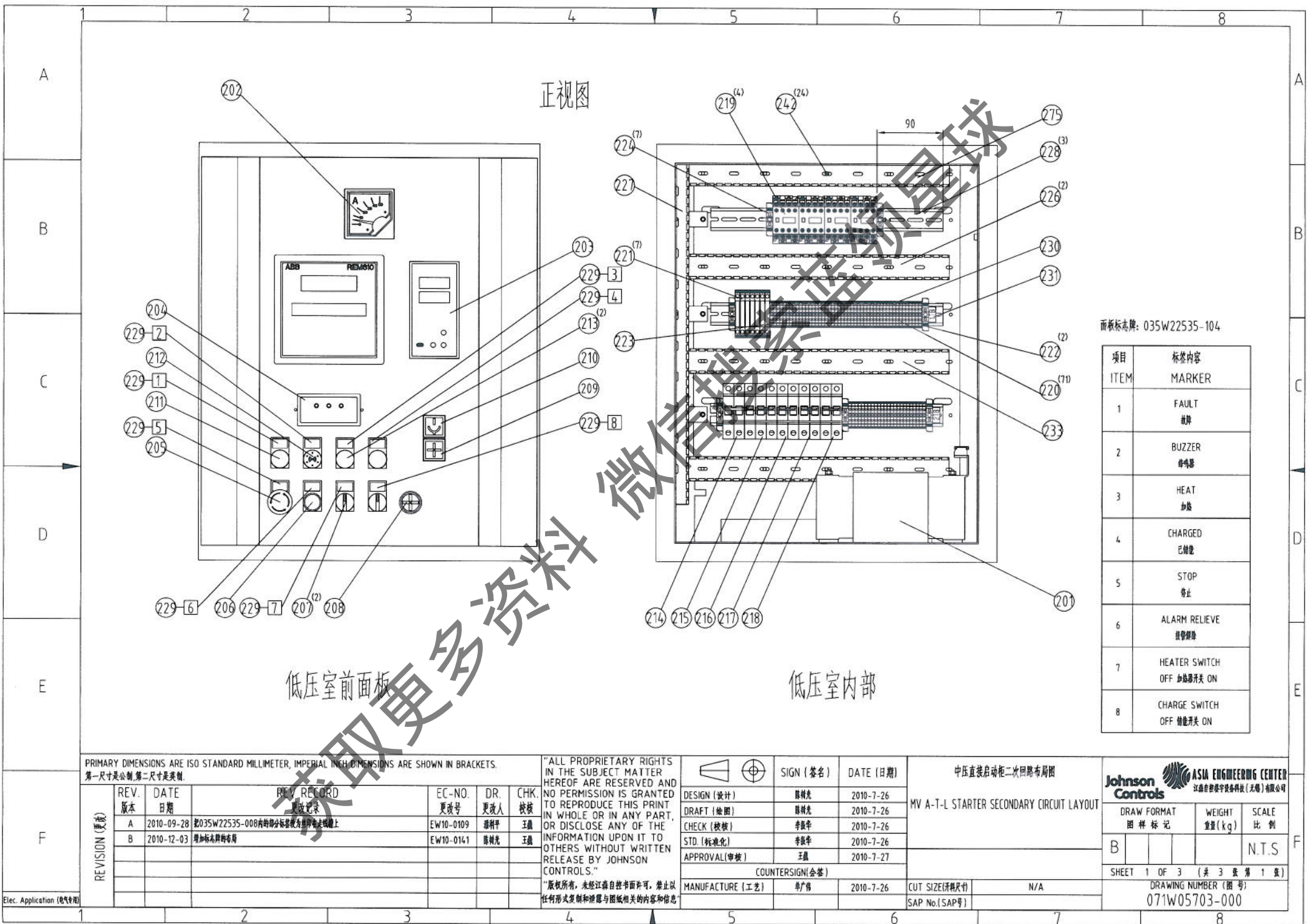
出  
到自电容柜  
不停电启动时  
NOTES:  
FROM CAPCITANCE  
COMPENSATION PANEL,  
SHOULD BE SHORT-CIRCUITED  
WITHOUT CAPCITANCE  
COMPENSATION PANEL.

- |                   |                       |                |                                       |                 |                 |                      |                     |                    |                    |                             |                          |                                    |                                    |                          |               |               |                   |            |                    |
|-------------------|-----------------------|----------------|---------------------------------------|-----------------|-----------------|----------------------|---------------------|--------------------|--------------------|-----------------------------|--------------------------|------------------------------------|------------------------------------|--------------------------|---------------|---------------|-------------------|------------|--------------------|
| 微型断路器             | 控制中心信号                | 闭锁电磁铁          | 储能回路                                  | 合闸              | 分闸              | 失压保护                 | 储能指示                | 合闸指示               | 分闸指示               | 手车工作位置                      | 手车试验位置                   | 地刀合位                               | 地刀分位                               | 电动机绕组温度                  | 装置电源          | 故障指示          | 故障信号灯             | 故障音响       | 故障音响解除             |
| Miniature breaker | Signal control center | Locking magnet | Closing spring charging motor circuit | Closing circuit | Cut-off circuit | Undervoltage release | Charging indication | Closing indication | Cut-off indication | Operate position indication | Test position indication | Earthing switch closing indication | Earthing switch cut-off indication | High temperature cut-off | Device supply | Fault cut-off | Fault signal lamp | Fault horn | Fault horn release |

PRIMARY DIMENSIONS ARE ISO STANDARD MILLIMETER, IMPERIAL INCH DIMENSIONS ARE SHOWN IN BRACKETS.  
第一尺寸是公制,第二尺寸是英制。

"ALL PROPRIETARY RIGHTS IN THE SUBJECT MATTER HEREOF ARE RESERVED AND NO PERMISSION IS GRANTED TO REPRODUCE THIS PRINT IN WHOLE OR IN ANY PART, OR DISCLOSE ANY OF THE INFORMATION UPON IT TO OTHERS WITHOUT WRITTEN RELEASE BY JOHNSON CONTROLS."  
"版权所有,未经江森自控许可,禁止以任何形式复制和透露与图纸相关的内容和信息"

DESIGN (设计)	SIGN (签名)	日期	Unigear550直接启动原理图		
	日期		Unigear550 across the line schematic		
	DRAFT (绘图)	日期	ASIA ENGINEERING CENTER 江森自控楼宇设备(无锡)有限公司		
	CHECK (校核)	日期	DRAW FORMAT 图样标记	WEIGHT 重量(kg)	SCALE 比例
	STD. (标准化)	日期	B	/	N.T.S
APPROVAL (审核)	日期	SHEET 2 OF 2 (共 2 页 第 2 页)			
COUNTERSIGN (会签)			DRAWING NUMBER (图号)		
MANUFACTURE (工艺)	日期	CUT SIZE (材料尺寸)	035W22538-000		
			SAP No.(SAP号)		



正视图

低压室前面板

低压室内部

面板标志牌: 035W22535-104

项目 ITEM	标志内容 MARKER
1	FAULT 故障
2	BUZZER 蜂鸣器
3	HEAT 加热
4	CHARGED 已充电
5	STOP 停止
6	ALARM RELIEVE 报警解除
7	HEATER SWITCH OFF 加热器开关 ON
8	CHARGE SWITCH OFF 充电开关 ON

PRIMARY DIMENSIONS ARE ISO STANDARD MILLIMETER, IMPERIAL INCH DIMENSIONS ARE SHOWN IN BRACKETS.  
第一尺寸是公制, 第二尺寸是英制.

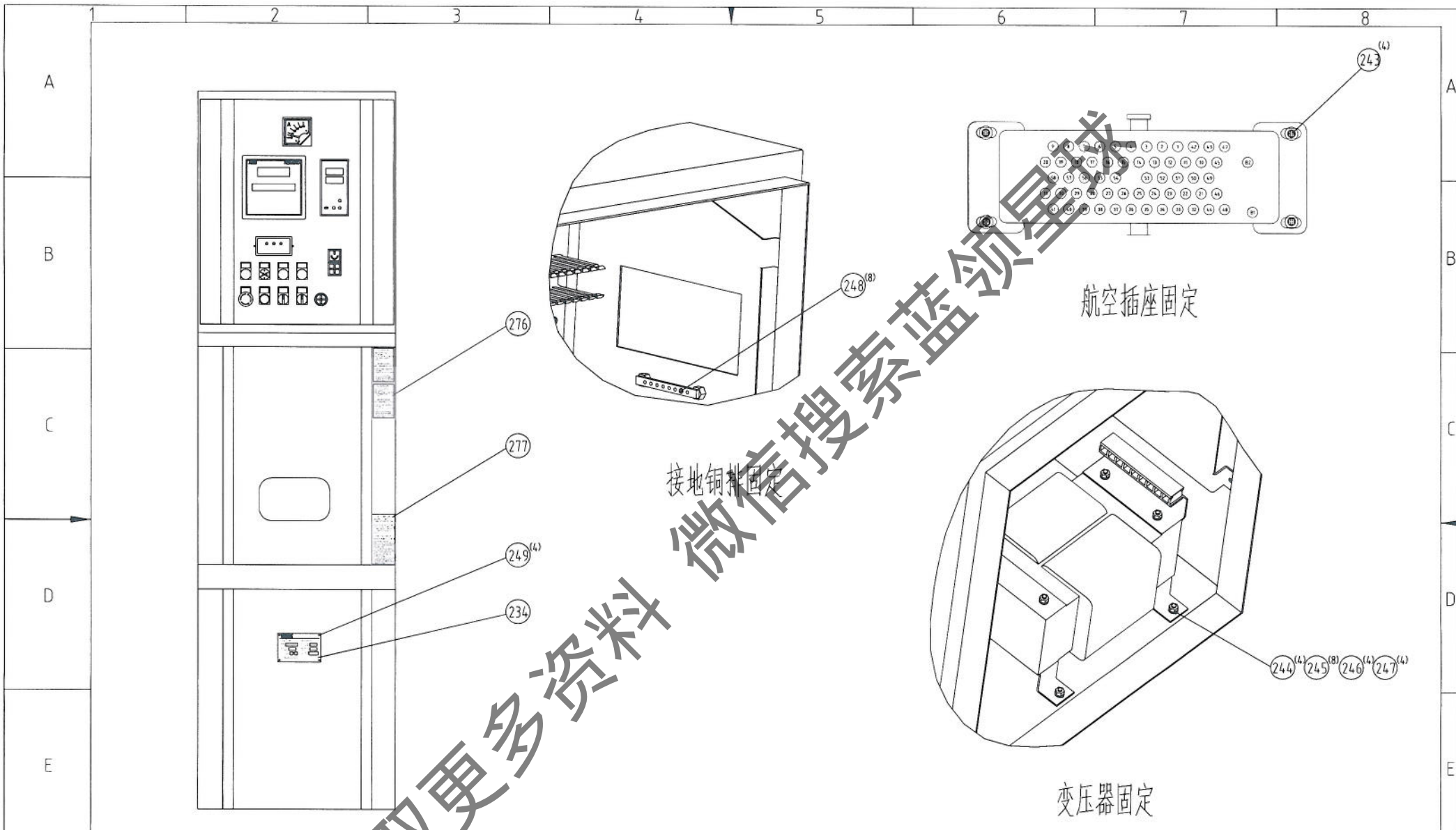
REV.	DATE	REV. RECORD	EC-NO.	DR.	CHK.
版本	日期	更改记录	更改号	更改人	校核
A	2010-09-28	把035W22535-008内的部分标志改为与柜体主板上	EW10-0109	潘利平	王鑫
B	2010-12-03	增加标志牌的布局	EW10-0141	潘利平	王鑫

"ALL PROPRIETARY RIGHTS IN THE SUBJECT MATTER HEREOF ARE RESERVED AND NO PERMISSION IS GRANTED TO REPRODUCE THIS PRINT IN WHOLE OR IN ANY PART, OR DISCLOSE ANY OF THE INFORMATION UPON IT TO OTHERS WITHOUT WRITTEN RELEASE BY JOHNSON CONTROLS."  
"版权所有, 未经江苏自控书面许可, 禁止以任何形式复制和透露与图纸相关的内容和信息"

	SIGN (签名)	DATE (日期)
DESIGN (设计)	陈树光	2010-7-26
DRAFT (绘图)	陈树光	2010-7-26
CHECK (校核)	李振宇	2010-7-26
STD. (标准化)	李振宇	2010-7-26
APPROVAL (审核)	王鑫	2010-7-27
COUNTERSIGN (会签)		
MANUFACTURE (工艺)	单广信	2010-7-26

中压直接启动柜二次回路布局图	
MV A-T-L STARTER SECONDARY CIRCUIT LAYOUT	
CUT SIZE (齐整尺寸)	N/A
SAP No. (SAP号)	

Johnson Controls ASIA ENGINEERING CENTER 江苏自控电气有限公司		
DRAW FORMAT 图样标记	WEIGHT 重量(kg)	SCALE 比例
B		N.T.S
SHEET 1 OF 3 (共 3 页 第 1 页)		
DRAWING NUMBER (图号) 071W05703-000		



PRIMARY DIMENSIONS ARE ISO STANDARD MILLIMETER, IMPERIAL INCH DIMENSIONS ARE SHOWN IN BRACKETS.  
第一尺寸是公制,第二尺寸是英制.

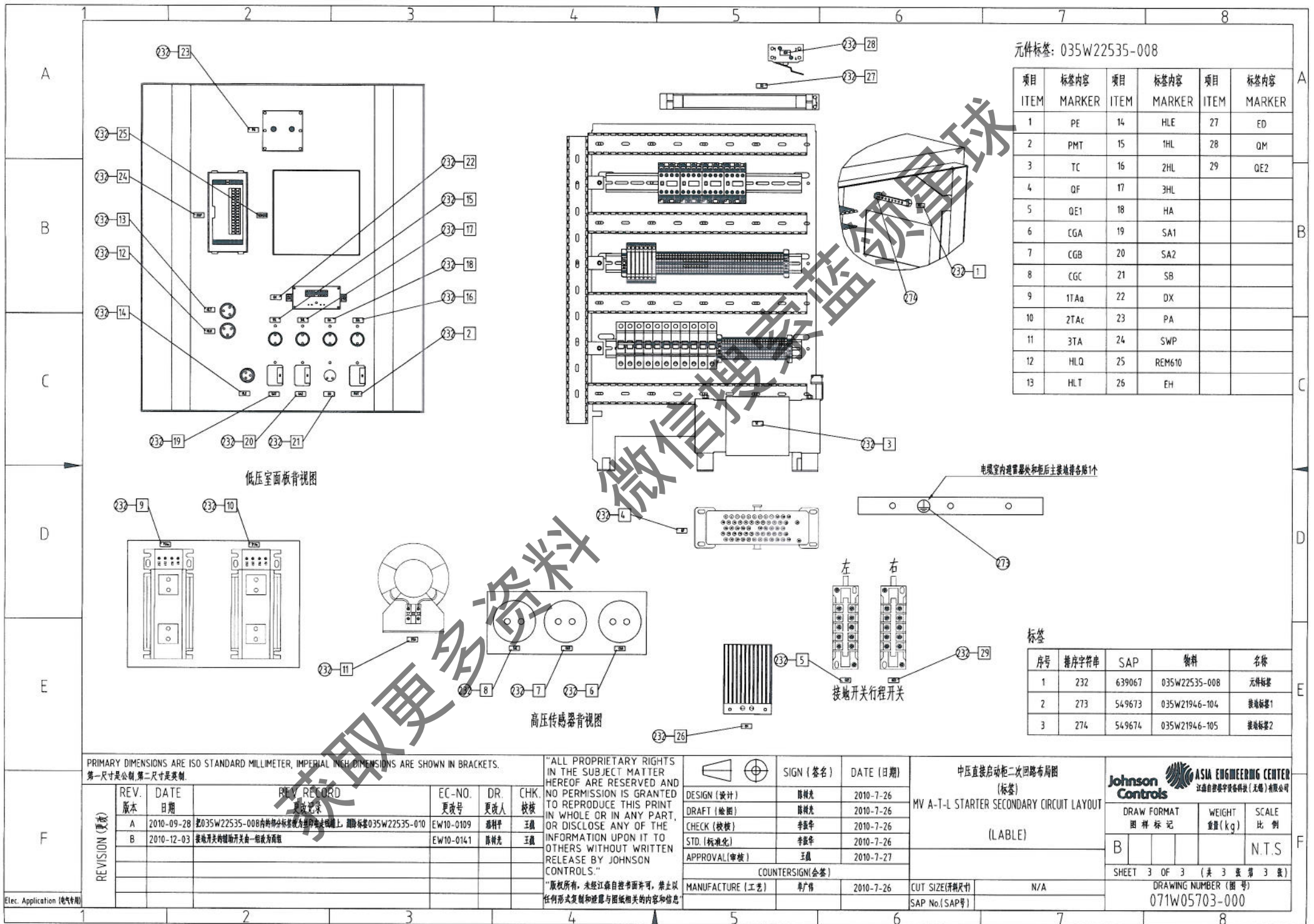
REV.	DATE	REV RECORD	EC-NO.	DR.	CHK.
版本	日期	更改记录	更改号	更改人	校核
A	2010-09-28	把035W22535-008内的部分标号改为与035W22535一致	EW10-0109	潘利平	王晨
B	2010-12-03	增加熔断器和接地开关件说明	EW10-0141	蔡明光	王晨

"ALL PROPRIETARY RIGHTS IN THE SUBJECT MATTER HEREOF ARE RESERVED AND NO PERMISSION IS GRANTED TO REPRODUCE THIS PRINT IN WHOLE OR IN ANY PART, OR DISCLOSE ANY OF THE INFORMATION UPON IT TO OTHERS WITHOUT WRITTEN RELEASE BY JOHNSON CONTROLS."  
"版权所有,未经江森自控书面许可,禁止以任何形式复制和泄露与图纸相关的内容和信息"

DESIGN (设计)	SIGN (签名)	DATE (日期)
蔡明光	蔡明光	2010-7-26
DRAFT (绘图)	蔡明光	2010-7-26
CHECK (校核)	李振宇	2010-7-26
STD. (标准化)	李振宇	2010-7-26
APPROVAL (审核)	王晨	2010-7-27
COUNTERSIGN (会签)		
MANUFACTURE (工艺)	唐广伟	2010-7-26

中压直接启动柜二次回路布局图  
(紧固件)  
MV A-T-L STARTER SECONDARY CIRCUIT LAYOUT  
(TIGHTNESS)

DRAW FORMAT	WEIGHT	SCALE
图样标记	重量(kg)	比例
B		N.T.S
SHEET 2 OF 3 (共 3 页 第 2 页)		
DRAWING NUMBER (图号)		
071W05703-000		



元件标签: 035W22535-008

项目 ITEM	标签内容 MARKER	项目 ITEM	标签内容 MARKER	项目 ITEM	标签内容 MARKER
1	PE	14	HLE	27	ED
2	PMT	15	1HL	28	QM
3	TC	16	2HL	29	QE2
4	QF	17	3HL		
5	QE1	18	HA		
6	CGA	19	SA1		
7	CGB	20	SA2		
8	CGC	21	SB		
9	1TAa	22	DX		
10	2TAc	23	PA		
11	3TA	24	SWP		
12	HLQ	25	REM610		
13	HLT	26	EH		

电缆室内避雷器柜后主接地排各站1个

标签

序号	排序字符串	SAP	物料	名称
1	232	639067	035W22535-008	元件标签
2	273	549673	035W21946-104	接地标签1
3	274	549674	035W21946-105	接地标签2

PRIMARY DIMENSIONS ARE ISO STANDARD MILLIMETER, IMPERIAL INCH DIMENSIONS ARE SHOWN IN BRACKETS.  
第一尺寸是公制,第二尺寸是英制.

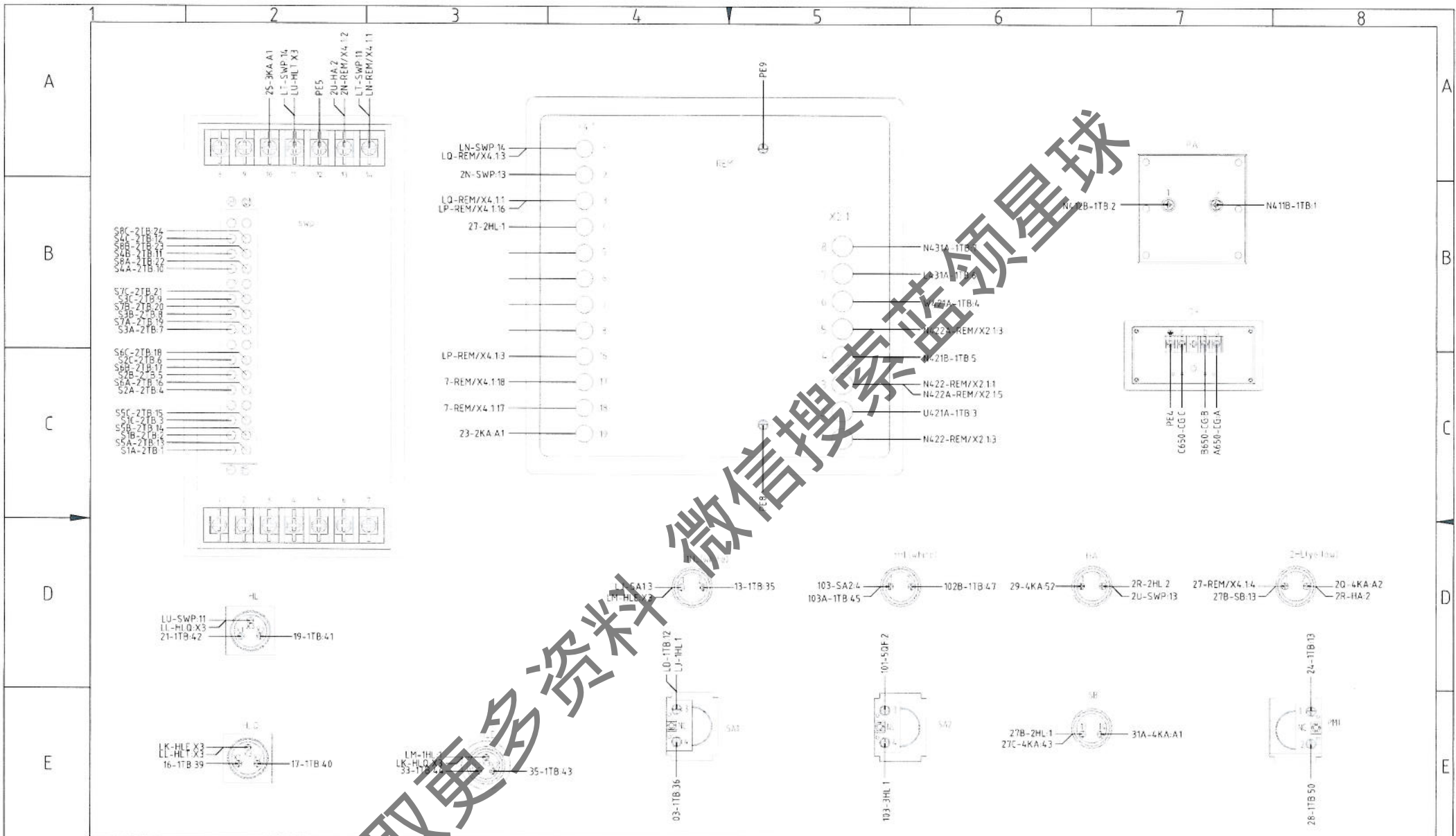
"ALL PROPRIETARY RIGHTS IN THE SUBJECT MATTER HEREOF ARE RESERVED AND NO PERMISSION IS GRANTED TO REPRODUCE THIS PRINT IN WHOLE OR IN ANY PART, OR DISCLOSE ANY OF THE INFORMATION UPON IT TO OTHERS WITHOUT WRITTEN RELEASE BY JOHNSON CONTROLS."  
"版权所有,未经江森自控书面许可,禁止以任何形式复制和透露与图纸相关的内容和信息"

REV.	DATE	REV. RECORD	EC-NO.	DR.	CHK.
版本	日期	更改记录	更改号	更改人	校核
A	2010-09-28	把035W22535-008内的部分标签改为组内统一标准上,删除标签035W22535-010	EW10-0109	潘利平	王磊
B	2010-12-03	接地开关的辅助开关由一组成改为组	EW10-0141	薛朝龙	王磊

	SIGN (签名)	DATE (日期)
DESIGN (设计)	薛朝龙	2010-7-26
DRAFT (绘图)	薛朝龙	2010-7-26
CHECK (校核)	李振华	2010-7-26
STD. (标准化)	李振华	2010-7-26
APPROVAL (审核)	王磊	2010-7-27
COUNTERSIGN (会签)		
MANUFACTURE (工艺)	黄广伟	2010-7-26

中压直接启动柜二次回路布局图 (标签)	
MV A-T-L STARTER SECONDARY CIRCUIT LAYOUT (LABEL)	
CUT SIZE (济制尺寸)	N/A
SAP No.(SAP号)	

Johnson Controls ASIA ENGINEERING CENTER 江森自控楼宇科技(无锡)有限公司		
DRAW FORMAT 图样标记	WEIGHT 重量(kg)	SCALE 比例
B		N.T.S
SHEET 3 OF 3 (共 3 页 第 3 页)		
DRAWING NUMBER (图号) 071W05703-000		



PRIMARY DIMENSIONS ARE ISO STANDARD MILLIMETER, IMPERIAL INCH DIMENSIONS ARE SHOWN IN BRACKETS.  
第一尺寸是公制,第二尺寸是英制。

"ALL PROPRIETARY RIGHTS IN THE SUBJECT MATTER HEREOF ARE RESERVED AND NO PERMISSION IS GRANTED TO REPRODUCE THIS PRINT IN WHOLE OR IN ANY PART, OR DISCLOSE ANY OF THE INFORMATION UPON IT TO OTHERS WITHOUT WRITTEN RELEASE BY JOHNSON CONTROLS."  
"版权所有,未经江苏自控书面授权,禁止以任何形式复制和透露与图纸相关的内容和信息"

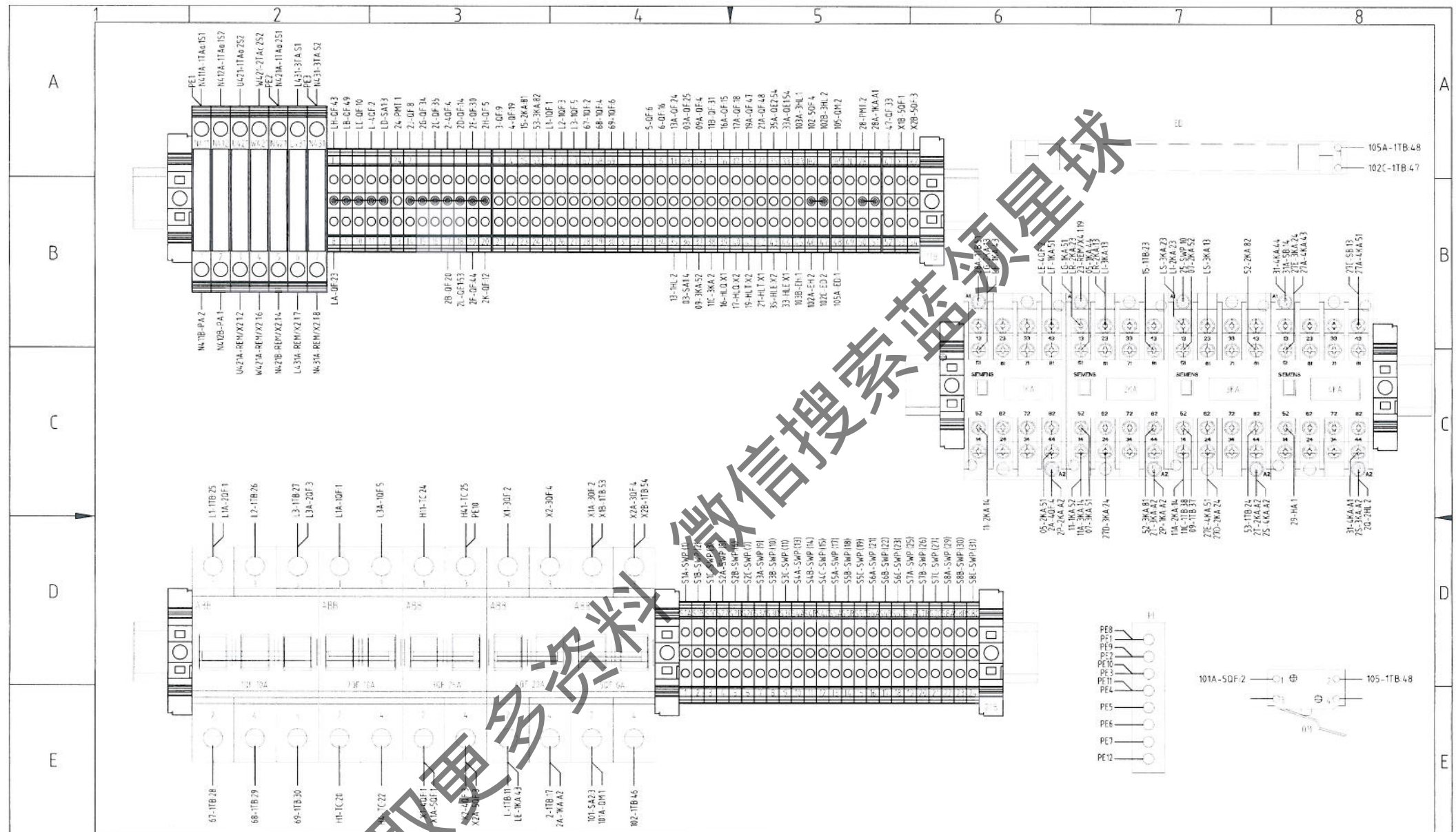
DESIGN (设计)	SIGN (签名)	DATE (日期)
李强平	李强平	2010/07/16
李强平	李强平	2010/07/16
李强平	李强平	2010/07/21
李强平	李强平	2010/07/21
李强平	王晨	2010/07/21
COUNTERSIGN(会签)		
MANUFACTURE (工艺)	单广伟	2010/07/20

Unigear550直接启动柜接线图  
WIRING DIAGRAM UNIGEAR550 ACROSS THE LINE  
/

DRAW FORMAT 图样标记			WEIGHT 重量(kg)	SCALE 比例	
B			/	N.T.S	
SHEET 1 OF 3 (共 3 页 第 1 页)					
DRAWING NUMBER (图号) 035W22538-010					

REV.	DATE	REV RECORD	EC-NO.	DR.	CHK.
版本	日期	更改记录	更改号	更改人	校核
A	2010-08-13	变压器TC的25号端子接地线改到30F的3号端子	EW10-0090	潘科平	王晨
B	2010-12-03	端子接地线由一根改为两根并联接地	EW10-0141	潘科平	王晨

Elec. Application (电气应用)



PRIMARY DIMENSIONS ARE ISO STANDARD MILLIMETER, IMPERIAL INCH DIMENSIONS ARE SHOWN IN BRACKETS.  
第一尺寸是公制,第二尺寸是英制

"ALL PROPRIETARY RIGHTS IN THE SUBJECT MATTER HEREOF ARE RESERVED AND NO PERMISSION IS GRANTED TO REPRODUCE THIS PRINT IN WHOLE OR IN ANY PART, OR DISCLOSE ANY OF THE INFORMATION UPON IT TO OTHERS WITHOUT WRITTEN RELEASE BY JOHNSON CONTROLS."  
"版权所有,未经江森自控书面授权,禁止以任何形式复制和透露与图纸相关的内容和信息"

DESIGN (设计)	SIGN (签名)	DATE (日期)
DRAFT (绘图)		
CHECK (校核)		
STD. (标准化)		
APPROVAL (审核)		
COUNTERSIGN (会签)		
MANUFACTURE (工艺)		

Unigear550直接启动柜接线图	
WIRING DIAGRAM UNIGEAR550 ACROSS THE LINE	
CUT SIZE (开料尺寸)	N/A
SAP No. (SAP号)	

<b>ASIA ENGINEERING CENTER</b> 江森自控楼宇设备分公司(无锡)有限公司		
DRAW FORMAT (图样标记)	WEIGHT (重量(kg))	SCALE (比例)
B		N.T.S
SHEET 2 OF 3 (共 3 页第 2 页)		
DRAWING NUMBER (图号)		
035W22538-010		

REV. (更改)	DATE (日期)	REV. RECORD (更改记录)	EC-NO. (更改号)	DR. (更改人)	CHK. (校核)
A	2010-08-13	变压器TC的25号端子接线图改到30F的3号端子	EW10-0090	潘利平	王磊
B	2010-12-03	端子接线图改成一图现改为两图增加端子	EW10-0141	潘利平	王磊

Elec. Application (电气专用)



